


**CITY OF LOS ANGELES**

INTER-DEPARTMENTAL CORRESPONDENCE

**DATE:** August 24, 2023

**TO:** Street and Transportation Projects Oversight Committee (STPOC)

**FROM:** Shirley Lau, Assistant Director  
Bureau of Street Services 

**SUBJECT: UPDATE AND REBASELINE OF THE FY 23-24 BUREAU OF STREET SERVICES STPOC PROJECTS LIST AND GANTT CHART**

**RECOMMENDATIONS**

1. Receive and file the updated Bureau of Street Services Projects List and Gantt Chart; and
2. Accept the addition of six Active Transportation Program Cycle 6 projects.

**TRANSMITTALS**

1. FY 23-24 STPOC Projects List
2. FY 23-24 Gantt Chart

**DISCUSSION**

Adjustments have been made to the Bureau of Street Services STPOC Projects List and Gantt Chart to reflect updates and changes since the prior submission. Completed projects listed in Table 1 were removed and six new Active Transportation Program Cycle 6 projects listed in Table 2 were added.

**Table 1: Completed Projects Removed from STPOC Projects List**

	Project Name	Total Project Cost	Project Scope
1	2028 Olympic Legacy Street Improvement Plan	\$609,000	Planning document completed that assessed infrastructure needs in the vicinity of 2028 Olympic venues.
2	Broadway/Manchester Beautiful Vision Plan	\$120,000	Planning document completed that provided a vision plan for existing median islands along Broadway.
3	Hollywood Pedestrian Transit Crossroads Project	\$1,602,000	Construction of streetscape improvements on Hollywood Bl with street trees, transit amenities and decorative ped lights.

4	L.A. River Bike Path - Headwaters Section	\$6,136,000	Construction of Class 1 bike/pedestrian path (1.25 miles) at LA River Headwaters in West San Fernando Valley from Owensmouth Ave to Mason Ave along south bank of the river.
5	Magnolia ES SRTS Improvements	\$233,000	Design review and construction management of curb ramps, curb extensions, continental crosswalks, and sidewalk reconstruction.
6	Sherman Way Improvements at White Oak Ave	\$222,669	Construction of median refurbishments and sidewalk improvements.
7	Watts Central Avenue	\$3,639,428	Construction of streetscape enhancements on 103rd St from Central Ave to Graham Ave and Central from 103rd St to Imperial Hwy.
	<b>TOTAL</b>	<b>\$12,562,097</b>	

**Table 2: ATP Cycle 6 Awards - Additions to the STPOC Projects List for FY 23-24**

	Project Name	Total Project Cost	Project Scope
1	Boyle Heights Community Connectivity Project	\$37,725,000	Pedestrian and biking infrastructure in a disadvantaged community in the eastern portion of the City of Los Angeles to support residents traveling between key locations safely and equitably.
2	Normandie Beautiful: Creating Neighborhood Connections in South L.A	\$27,774,000	Project includes enhanced pedestrian crossings, shade trees, and traffic signal modifications, neighborhood traffic circles, speed humps, and bicycle facilities that connect residents to schools, neighborhood parks, public facilities, and other key community resources
3	Osborne St: Path to Park Access Project	\$49,832,000	The project fills a critical 1.65-mile gap in pedestrian and bicycle connections between Hansen Dam Open Space and the San Fernando Road Bicycle Path that connects to two Metrolink stations along San Fernando Road and Metro's East San Fernando Light Rail Transit Project.
4	Skid Row Connectivity and Safety Project	\$47,566,000	Project will transform a section of Downtown Los Angeles that has suffered from blight and lack of investment over decades, enabling pedestrians, cyclists, residents and businesses to co-exist and travel in the neighborhood safely and equitably.

5	Western Our Way: Walk and Wheel Improvements	\$47,765,000	Project will implement urgently-needed improvements spanning 4-1/2 miles of Western Avenue with curb extensions, new and upgraded traffic signals, pedestrian-level lighting, shade trees, upgraded curb ramps, and high visibility crosswalks, and nearly 7 miles of a new neighborhood bike network consisting of diverters, speed humps, and neighborhood traffic circles.
6	Wilmington Safe Streets: A People First Approach	\$40,784,000	Project will benefit residents who are disproportionately affected by environmental justice issues stemming from surrounding industrial land uses (2 of the largest US ports, 4 major oil refineries, 4 asphalt refiners, and a large oil field) as well as 3 freeways and the Alameda Corridor (intercontinental freight rail corridor).
	TOTAL	\$251,446,000	

If you have any further questions or require additional information, please contact Shirley Lau at [shirley.lau@lacity.org](mailto:shirley.lau@lacity.org) or at (213)847-3333.

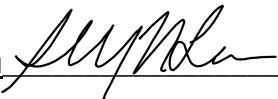
SL:sl

cc: David Hirano- CAO, Salyna Cun- CAO, Daisy Bonilla- CAO, Maria Souza-Rountree- CLA

## STPOC Annual Rebaselining Inter-departmental Coordination Attestation

“Through the signature below, the Bureau of Street Services attests the following:

- That, for each project included on the project list and in the Gantt chart attached, we have notified all City departments whose cooperation is required to complete these projects that their assistance is required. Furthermore, project schedules presented here accurately and completely reflect input from these City departments; and,
- We have provided accurate and complete input to City projects lead by other City departments that require our assistance. It is our understanding that those project schedules reflect our input and we reasonably expect to be able to help keep those projects on schedule.

By: \_\_\_\_\_ Shirley Lau  \_\_\_\_\_ Date: 8/24/2023 \_\_\_\_\_  
Title: \_\_\_\_\_ Assistant Director \_\_\_\_\_

The above Attestation shall be included annually by each City department (and Section) providing rebaselining information to the Street and Transportation Projects Oversight Committee.

This will be provided in addition to the:

- Project Lists and Gantt Charts;
- List of Projects Added
- List of Projects Removed (Completed/Canceled)

**Bureau of Street Services STPOC - Project Status Report**  
As of 8/24/2023

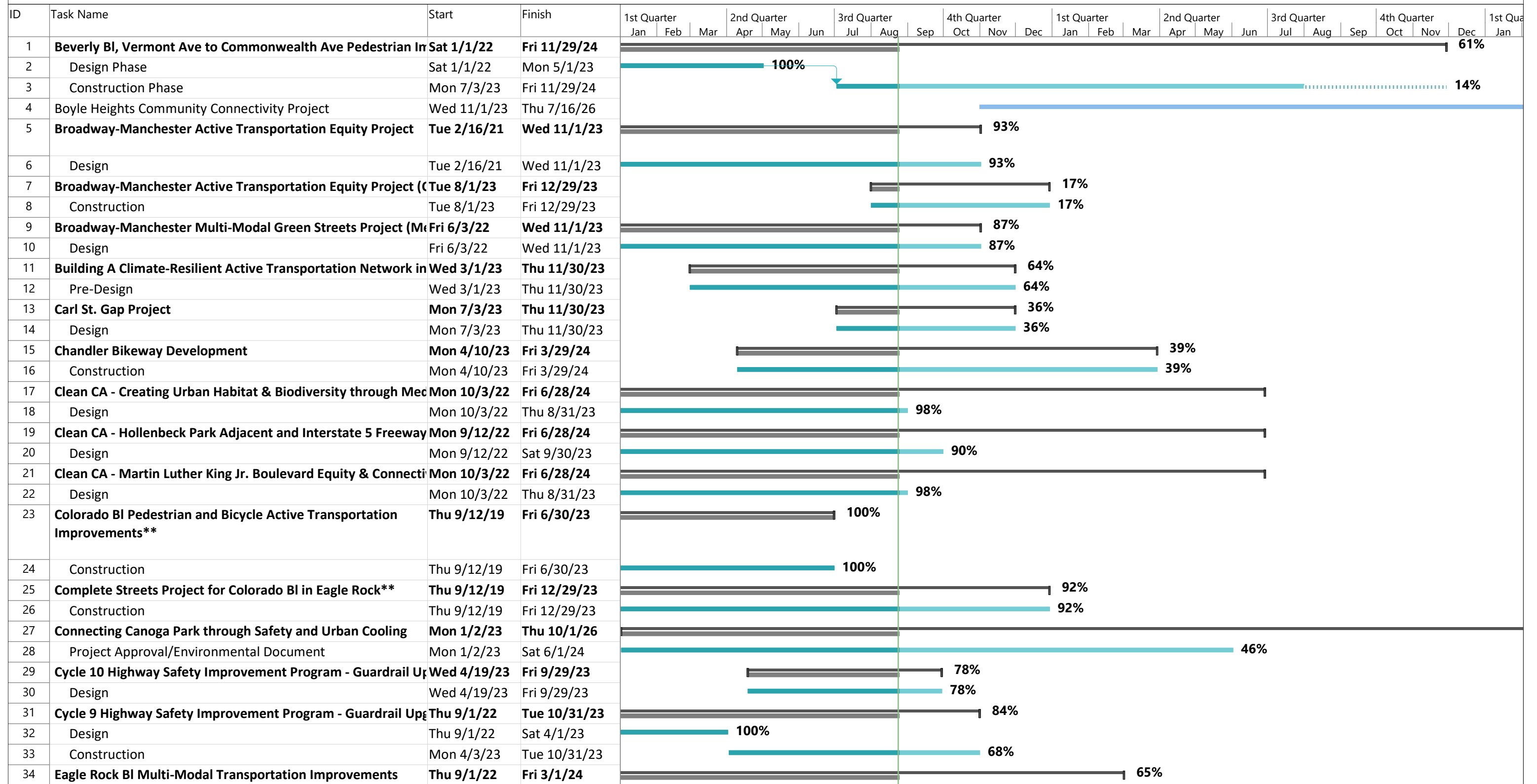
Summary			
1 - PreDesign	13	Contractor (Regular Award)	3
2 - Design - Active	18	Other	1
3 - Caltrans Approvals - Active	0	Street Services Forces	46
4 - Bid & Award	0		
5 - Construction - Active	17		
6 - Post-Construction	1		
Total 49		Total 49	

Project Title	Scope (Summary)	Total Project	Funding	Funding Gap	Authorization	Project Status	Current Status	CD(s)	Construction	Project	Federal Aid ID	Supporting Departments
1 Beverly Bl, Vermont Ave to Commonwealth Ave Pedestrian Improvements**	Pedestrian improvements and streetscape enhancements to provide linkages to major transit along Beverly Bl, Temple St, Virgil Ave and Silverlake Bl.	\$3,465,229	Metro LTF: \$2,772,254 PropC: \$692,975 Total funding: \$3,465,229		2015 Call for Projects	Design is complete. Ready for construction.	100% Design (Active)	13	Street Services Forces	Shirley Lau		
2 Boyle Heights Community Connectivity Project	The Boyle Heights Community Connectivity Project builds on existing and planned/funded walking and biking infrastructure in a disadvantaged community in the eastern portion of the City of Los Angeles to support residents traveling between key locations safely and equitably. The project's main corridor extends 1.5 miles along Boyle Ave between 1st St to the north and Olympic Blvd to the south. The project includes two sub-corridors: 7th St west of Boyle Ave to Myers St, connecting with existing and upcoming bike facilities and the entryway to the new 6th St Viaduct PARC, and 8th St east of Boyle Ave to Olympic Blvd. The project scope includes protected bike lanes, enhanced crosswalks, new and upgraded ADA-compliant sidewalks, curb extensions and ramps, pedestrian lighting, shade trees, and traffic signal modifications. The project also includes 3 multi-modal hubs with bike share stations, bike lockers, scooter parking, and hydration stations: at the Mariachi Plaza Metro Station at Boyle Ave and 1st St, at Boyle Ave and Whittier Blvd just south of Hollenbeck Park, and at 8th St and Grande Vista Ave adjacent to Estrada Courts public housing operated by the Housing Authority of the City of Los Angeles (HACLA). The Boyle Heights Community Connectivity Project provides a safer environment for pedestrians and bicyclists, builds on other local active transportation infrastructure projects, connects to key land uses,	\$37,725,000	ATP: \$32,019,000, Local Match: \$5,706,000 Total funding: \$37,725,000		Active Transportation Program Cycle 6	CTC Allocation approved for PA/ED in August 2023.	0% Pre-Design (Active)	8	Street Services Forces and Contractor	Shirley Lau		DOT, BSL, DWP, BOE
3 Broadway-Manchester Active Transportation Equity Project	Pedestrian and bicycle improvements to provide safer and equitable active transportation including new cycle track, median modifications, sidewalk, curb ramps, and other safety amenities.	\$46,600,000	ATP: \$24,821,000 INFRA: \$18,000,000 Total funding: \$42,821,000	\$ 1,279,000	ATP Cycle 4	Design is ongoing.	75% Design (Active)	8	Street Services Forces	Gina Liang	ATPL-5006(895)	BSL, DOT, DWP
4 Broadway-Manchester Active Transportation Equity Project (CNRA)	The Broadway-Manchester Active Transportation Equity Project Urban Greening proposal will supplement hardscape improvements that are funded through the Active Transportation Program (ATP) by providing much-needed shade trees on a 2.8-mile corridor of underutilized medians.	\$713,804	California Natural Resources Agency : \$713,804 ATP/W Programs: \$42,763,196 Total funding: \$713,804		CNRA Urban Greening	Construction started 8/1/2023.	10% Construction (Active)	8	Street Services Forces	Gina Liang		
5 Broadway-Manchester Multi-Modal Green Streets Project (Measure W)	The project captures the 85th percentile storm runoff in public right-of-way storage distributed over 2.8 miles and uses the water for landscape irrigation; Primary Objectives: Meet water quality limits and utilize captured stormwater for onsite irrigation to maximize community benefits Secondary Objectives: Integrate stormwater management into active transportation opportunities	\$15,646,000	Measure W: \$11,719,000 ATP: \$3,927,000 Total funding: \$15,646,000		Safe Clean Water Program Round 2	Design is ongoing.	65% Design (Active)	8	Street Services Forces	Gina Liang		LASAN
6 Building A Climate-Resilient Active Transportation Network in Vulnerable Communities Project	Planning Grant that consists of: a ONE INFRASTRUCTURE PLAN that identifies high priority projects which integrate active transportation and climate resiliency in L.A.'s most vulnerable communities. The Plan will be informed by a RESILIENT STREETS PLANNING ASSESSMENT (RSPA) which takes the following into consideration: multi-mobility, water quality compliance, and greening. This effort will culminate in grant-ready and competitive projects with flexibility to curate projects to better suit the priorities of its grant sources, thereby resulting in a true One Infrastructure multi-benefit street transformation. A chosen MODEL CORRIDOR will exhibit multi-benefit features that can be emulated throughout the City. Working with community and technical stakeholders, the proposal will integrate multiple agencies' plans and data to inform its RSPA criteria to identify its most urgent projects.	\$466,500	Caltrans Sustainable Communities Program: \$412,992 City Funds: \$53,508 Total funding: \$466,500		Caltrans Sustainable Communities	Technical Advisory Committee formed. Outreach meetings occurring.	5% PreDesign (Active)	CW	Other	Shirley Lau		LASAN, DOT, DCP
7 Carl St. Gap Project	Construct ADA compliant sidewalk, access ramps, driveways, and curb & gutter along the project limits. Also, the project will relocate conflicting utilities as necessary and reconstruct portions of the asphalt concrete street as necessary.	\$785,225	CDBG: \$785,225 Total funding: \$785,225		CDBG	Project Eligibility Proposal has been submitted. Survey on-going.	15% Design (Active)	7	Street Services Forces	David Bou		
8 Chandler Bikeway Development	New plazas, landscaping, and access improvements to the Chandler Bikeway	\$1,200,000	CRA/LA: \$1,200,000 Total funding: \$1,200,000		CRA/LA Excess Bond Proceeds	Partial work performed by GSD Contractor and by BSS Force Account.	65% Construction (Active)	2	Contractor (Regular Award)	Shirley Lau		
9 Clean CA - Creating Urban Habitat & Biodiversity through Median Greening	Improvement of existing medians located in six of the City of Los Angeles's historically underserved communities-Chinatown/Downtown LA, Van Nuys, Vermont Vista, Historic South Central, Leimert Park, and Wilmington, enhancing the City's medians by replacing water consuming turf, inefficient irrigation systems, and litter strewn areas with native and/or drought tolerant planting and water-efficient irrigation	\$4,978,000	CCLGP: \$4,978,000		Clean California Local Grant Program	Design on-going. Two medians are ready for construction, outreach efforts to community is in progress.	90% Design (Active)	1, 6, 8, 9, 10, 15	Street Services Forces	Shirley Lau	CCL-5006(934)	
10 Clean CA - Hollenbeck Park Adjacent and Interstate 5 Freeway Adjacent Beautification	Project improvements include installing new sidewalks, planting over 200 trees, and adding new street and pedestrian lights, new fencing, and a new park entryway for safer access to Hollenbeck Park and its immediate vicinity.	\$4,993,180	CCLGP: \$4,993,180		Clean California Local Grant Program	Working with Caltrans District 7 on encroachment permit for fencing along Caltrans R/W. BSL working on plans for lighting.	50% Design	14	Street Services Forces	David Bou	CCL-5006(935)	BSL,RAP
11 Clean CA - Martin Luther King Jr. Boulevard Equity & Connectivity through Greening	Conversion of seven locations along the corridor from paved median to raised landscaped medians with native and/or drought tolerant landscape and tree planting, rehabilitating two existing pedestrian refuge triangles into accessible green spaces with water efficient irrigation, and improving sidewalk and bus stop conditions along the corridor in Historic South Central.	\$5,000,000	CCLGP: \$5,000,000		Clean California Local Grant Program	Finalized Restricted Grant Agreement with Caltrans. Anticipated design to begin spring 2023.	30% Design	9	Street Services Forces	Shirley Lau	CCL-5006(936)	
12 Colorado Bl Pedestrian and Bicycle Active Transportation Improvements**	Improved conditions for those who walk or bicycle in the Eagle Rock neighborhood of the City of Los Angeles including curb extensions, refuge median islands, sidewalk improvements, street furniture, pedestrian lighting, and bicycle lane improvements.	\$9,843,000	ATP: \$9,743,000 Prop C: \$100,000 Total funding: \$9,843,000		Active Transportation Program Cycle 2	Construction is complete for ATP grant. Project close-out on-going.	0% Post-Construction	14	Street Services Forces	Shirley Lau	ATPL-5006(849)	BSL, DOT
13 Complete Streets Project for Colorado Bl in Eagle Rock**	Implement "Complete Streets" elements on Colorado Boulevard by installing new signals (two non consecutive intersections), turn lanes, median islands, bump-outs, and pedestrian lighting.	\$2,193,000	Metro Prop C: \$1,754,000 PropC: \$439,000 Total funding: \$2,193,000		2015 Call for Projects	Construction is ongoing.	50% Construction (Active)	14	Street Services Forces	Feng Li		BSL, DOT
14 Connecting Canoga Park through Safety and Urban Cooling	Project scope includes transformation of 7 miles of streets in the heart of the Canoga Park community adjacent to the Orange (G) Line Rapid Bus Corridor and Orange Line Pedestrian and Bike Trail in the west San Fernando Valley. Class IV Cycletrack on Sherman Way and on Owensmouth Avenue, speed humps, mini roundabouts, upgraded and new sidewalks on Valerio St and Varie! Ave; and urban cooling features will be added to the Orange Line Trail to address impacts from extreme heat days; address gaps in connectivity between the Orange Line trail and the LA River Greenway	\$38,655,000	ATP: \$30,731,000 TGF: \$7,924,000 Total funding: \$38,655,000		Active Transportation Program Cycle 5	Pre-Design and Project Approval/Environmental Document (PA/ED) on-going.	20% Pre-Design (Active)	3	Street Services Forces	Brian Athn	ATPL-5006(918)	BSL, DOT, DWP
15 Cycle 10 Highway Safety Improvement Program - Guardrail Upgrades	Upgrade existing obsolete guardrails to modern metal beam guardrails in various locations throughout the City.	\$1,000,000	HSIP: \$1,000,000 Total funding: \$1,000,000		HSIP Cycle 10	Design has started and is ongoing.	10% Design (Active)	CW	Street Services Forces	Ricardo Acosta	HSIPSL-5006(926)	
16 Cycle 9 Highway Safety Improvement Program - Guardrail Upgrades	Upgrade existing obsolete guardrails to modern metal beam guardrails in various locations throughout the City.	\$1,000,000	HSIP: \$1,000,000 Total funding: \$1,000,000		HSIP Cycle 9	Construction is on-going.	50% Construction (Active)	CW	Street Services Forces	Ricardo Acosta	HSIPL-5006(889)	
17 Eagle Rock Bl Multi-Modal Transportation Improvements	Various pedestrian and bicycle safety and mobility improvements on Eagle Rock Bl between Colorado Bl and York Bl, also on Fair Park Ave between Eagle Rock Bl and Mawood Ave.	\$16,362,000	710 MIP: \$16,362,000		SR 710 MIP	PreDesign is ongoing.	30% PreDesign (Active)	14	Street Services Forces	Shirley Lau	STPL-5006(907)	BSL, DOT, DWP
18 El Sereno Active Transportation & Transit Connectivity Enhancements	Various active transportation and transit improvements in the El Sereno community with a focus on Alhambra Ave, Marianna Ave, Huntington Dr, and Beate Pl.	\$6,000,000	710 MIP: \$6,000,000		SR 710 MIP	PreDesign is ongoing.	20% PreDesign (Active)	14	Street Services Forces	Shirley Lau	STPL-5006(911)	BSL, DOT, DWP
19 Elmer Ave Pedestrian Improvements	Driveway, curb, and sidewalk improvements	\$120,000	CRA/LA: \$120,000 Total funding: \$120,000		CRA/LA Excess Bond Proceeds	Design is suspended due to construction of adjacent Homes for Families housing project.	0% Design (Active)	2	Street Services Forces	Shirley Lau		
20 Huntington Dr Sidewalk Improvements	Sidewalk gap closure, sidewalk repairs, curb ramps, retaining wall and other accessibility improvements along Huntington Dr and adjacent streets	\$750,000	CDBG: \$750,000 Total funding: \$750,000		CDBG	Construction is ongoing.	90% Construction (Active)	14	Street Services Forces	Shirley Lau		
21 Imperial Highway Bike Lanes	Modification of median island and widening of Imperial Hwy. along 1000 feet just east of Pershing Dr. to accommodate bike lanes.	\$2,322,000	CMAQ: \$1,506,000 STPE: \$352,000 PropC: \$464,000 Total funding: \$2,322,000		Metro Call for Projects	E-76 for Construction received and is ready for construction.	100% Design (Active)	11	Street Services Forces	Eddie Giron	RPSTPLE- 5006(654)	DOT
22 L.A. River Bike Path - Phase IV Construction	Class I bikeway on the south bank of the Los Angeles River Flood Control Channel from Riverside Drive to Forest Lawn Drive On-Off Ramps.	\$2,284,000	PropC: \$457,000 CMAQ: \$1,827,000 Total funding: \$2,284,000		Metro Call for Projects	Design is ongoing.	35% Design (Active)	4	Contractor (Regular Award)	Eddie Giron		DOT

23	LANI Santa Monica	Multi-modal streetscape improvements along Santa Monica Bl between 101 Fwy and Hoover St.	\$1,433,575	Metro PC25: \$1,146,860 PropC: \$286,715 Total funding: \$1,433,575		2015 Call for Projects	Construction is ongoing.	80% Construction (Active)	13	Street Services Forces	Shirley Lau		
24	Lankershim Plaza Improvements	Various placemaking elements at the Lankershim Bl People St plaza.	\$250,000	CRA/LA: \$250,000 Total funding: \$250,000		CRA/LA Excess Bond Proceeds	Design is ongoing.	55% Design (Active)	2	Street Services Forces	Shirley Lau		
25	Maya Corridor Streetscape	The Maya Corridor project is on 6th St. from Park View St. to Loma Drive, and will highlight and celebrate Maya culture. The project scope includes tree planting, upgraded curb ramps, wayfinding, and several cultural placemaking elements, such as a Maya-inspired gateway arch monument, custom crosswalks and scrambles, decorative sidewalk paving, custom bus safety lights, and other street amenities. All furniture will be bolted to the ground with anti-vandal hardware.	\$4,283,701	CDBG/FPY47: \$2,496,157 MacArthur Westlake (RAP)-CRA Excess Bond: \$1,787,544 Total funding: \$4,283,701		CRA/LA Excess Bond Proceeds	Construction is ongoing.	10% Construction (Active)	1	Street Services Forces	Shirley Lau		BSL, DWP
26	Melrose Ave - Fairfax Ave to Highland Ave Pedestrian Improvements**	First/Last mile connectivity improvements along Melrose Ave.	\$3,906,000	Oth: \$2,960,531 PropC: \$945,182 Total funding: \$3,906,713		2015 Call for Projects	Construction is ongoing.	99% Construction (Active)	5	Street Services Forces	Shirley Lau		
27	Mission Mile: Sepulveda Visioning for a Safe and Active Community	Project scope includes lane reconfiguration, Class I Bike Paths and walking paths in underutilized medians along most of Sepulveda, Class IV Cycle Track on Sepulveda north of Brand Blvd., bus bulb outs, mid-block crossings with pedestrian hybrid beacons, upgraded and new curb ramps, upgraded and new sidewalks, flexible delineators, high visibility crosswalks, tree planting, pedestrian-level lighting, signal modifications, new traffic signal, and slip lane closure.	\$49,900,000	ATP: \$39,670,000 TGF: \$10,230,000 Total funding: \$49,900,000		Active Transportation Program Cycle 5	Consultant team selected; community engagement and public outreach to start September 2023.	5% Pre-Design (Active)	7	Street Services Forces	Prashant Konreddy	ATPL-5006(920)	DOT, BSL, DWP
28	Martin Luther King (MLK) Bl Streetscape	The project is on MLK between the I-110 Fwy. and Central. CD9 requested MLK to be improved in order to connect this segment of MLK to the west side of the I-110 Fwy. where most future improvements are planned centered around Expo Park. Project elements include tree planting, pedestrian lighting, sidewalk/curb ramp repair, new medians, and possible placemaking elements.	\$6,550,000	Meas M (FY19/20): \$750,000 CTIEP GF (FY21/22): \$2,000,000 CTIEP SB1 (FY22/23): \$3,800,000 Total funding: \$6,550,000		CTIEP	Design is ongoing.	40% Design (Active)	9	Street Services Forces	Shirley Lau		
29	Normandie Beautiful: Creating Neighborhood Connections in South LA	Normandie Beautiful is a network of traffic safety improvements located in the West Expo Park and West Adams neighborhoods in the City of Los Angeles. Improvements include neighborhood Stress-Free Connections and Safe Routes to School for Vermont Avenue Elementary, with Normandie Avenue acting as the central spine for the Active Transportation improvements. The Project includes enhanced pedestrian crossings, shade trees, and traffic signal modifications along Normandie, and neighborhood traffic circles, speed humps, and bicycle facilities in the adjoining local streets that connect residents to schools, neighborhood parks, public facilities, and other key community resources. Close partnership with the local non-profit, Redeemer Community Partnership, ensured the scope of work connected improvements to existing and proposed projects that run perpendicular to Normandie Avenue.	\$27,774,000	ATP: \$23,579,000; Local Match: \$4,195,000 Total funding: \$27,774,000		Active Transportation Program Cycle 6	CTC Allocation approved for PA/ED in August 2023.	0% Pre-Design (Active)	8	Street Services Forces and Contractor	Shirley Lau		DOT, BSL, DWP, BOE
30	Normandie Beautiful Streetscape	Various streetscape and safety improvements	\$1,050,000	CRA/LA: \$1,050,000 Total funding: \$1,050,000		CRA/LA Excess Bond Proceeds	Design is ongoing.	20% Design (Active)	8	Street Services Forces	Shirley Lau		DOT
31	Northeast LA Active Transportation & Transit Connectivity Enhancements	Various active transportation and transit improvements in Northeast LA community with a focus on Marengo St, N. Figueroa St, York Bl, Yosemite Dr. and Arroyo Seco bike path connections.	\$5,000,000	710 MIP: \$5,000,000		SR 710 MIP	PreDesign is ongoing.	20% PreDesign (Active)	14	Street Services Forces	Shirley Lau	STPL-5006(906)	DOT, BSL, DWP
32	Orange Line Extension-Sherman Wy Station Ped. Impr**	Pedestrian and bicycle improvements to enhance connections to the new Orange Line station on Canoga Ave and Sherman Way.	\$1,441,000	ATP: \$1,153,000 Prop C: \$288,000 Total funding: \$1,441,000		2011 Call for Projects/CRA/ATP Cycle 2	Construction is ongoing.	90% Construction (Active)	3	Street Services Forces	Shirley Lau	ATPL-5006(850)	
33	Osborne St: Path to Park Access Project	The Osborne Street Path to Park Access Project would fill a critical 1.65-mile gap in pedestrian and bicycle connections between Hansen Dam Open Space and the San Fernando Road Bicycle Path that connects to two Metrolink stations along San Fernando Road and Metro's East San Fernando Light Rail Transit Project. This segment of Osborne Street has been identified in the City of Los Angeles' High Injury Network (HIN) so the project will address vital safety issues for pedestrians, park users, and residents. Key project elements include new sidewalk-level bike path to connect to existing bicycle networks, a widened sidewalk, new curb ramps, and high visibility crosswalks to provide pedestrian safety enhancements, curb extensions that reduce crossing distances for traffic calming, and new shade trees to mitigate the effects of climate change and provide a more comfortable active user experience.	\$49,832,000	ATP: \$42,295,000 Local Match: \$7,537,000 Total funding: \$49,832,000		Active Transportation Program Cycle 6	CTC Allocation approved for PA/ED in August 2023.	0% Pre-Design (Active)	7	Street Services Forces and Contractor	Shirley Lau		DOT, BSL, DWP, BOE
34	Parthenia St and Sepulveda Bl Streetscape Improvements	Various streetscape and safety improvements	\$2,000,000	CRA/LA: \$2,000,000 Total funding: \$2,000,000		CRA/LA Excess Bond Proceeds	Construction is on-going.	40% Construction (Active)	6	Street Services Forces	Shirley Lau		
35	Ricardo Lizarraga Elem. School**	Pedestrian improvements around the Ricardo Lizarraga Elementary School.	\$910,000	SafeRt: \$910,000 Total funding: \$910,000		SRTS Cycle 2/CRA	Construction is ongoing.	5% Construction (Active)	9	Street Services Forces	Shirley Lau	SRTSL-5006(681)	
36	San Fernando Rd Bikepath Phase IIIA Construction	The proposed bike path will have a minimum width of 12 feet, including an 8 foot travel way (two 4 foot lanes) for two-way bicycle travel and 2 foot wide paved shoulders. This design project is for the third phase of a planned 8.8-mile long bike path which will run parallel to the Santa Clarita Rail Line within the MTA right-of-way from Roxford Street in Sylmar to Cohasset Street at the Burbank City limit. Phase IIIA involves the construction of approximately 1.9 miles of Class I Bikeway (bike path) complete with welded wire-mesh fencing, lighting and landscaping.	\$12,714,000	ATP: \$10,597,000 TGF: \$2,117,000 Total funding: \$12,714,000		Active Transportation Program Cycle 1	Construction is ongoing.	95% Construction (Active)	2	Contractor (Regular Award)	LADOT		DOT
37	San Fernando Rd Bikepath Phase IIIB Construction	The proposed bike path will have a minimum width of 12 feet, including an 8 foot travel way (two 4 foot lanes) for two-way bicycle travel and 2 footwide paved shoulders. This design project is for the third phase of a planned 8.8-mile long bike path which will run parallel to the Santa Clarita Rail Line within the MTA right-of-way from Roxford Street in Sylmar to Cohasset Street at the Burbank City limit. Phase IIIB involves the construction of approximately 2.24 miles of Class I Bikeway (bike path) complete with welded wire-mesh fencing, lighting and landscaping.	\$12,716,000	ATP: 10,598,000 TGF: \$2,118,000 Total funding: \$12,716,000		Active Transportation Program Cycle 1	Construction is ongoing.	95% Construction (Active)	2	Contractor (Regular Award)	LADOT		DOT
38	Skid Row Connectivity and Safety Project	The Skid Row Connectivity and Safety Project will transform a section of Downtown Los Angeles that has suffered from blight and lack of investment over decades, enabling pedestrians, cyclists, residents and businesses to co-exist and travel in the neighborhood safely and equitably. The project's spine is the 1.8 mile San Pedro Street corridor between Temple St and 16th St, a key bicycle corridor in the City's Mobility Plan 2035, with other safety improvements along corridors branching out from San Pedro St. The project calls for a wide array of bicycle and pedestrian improvements that are designed to close gaps in the existing bicycle and pedestrian network while also connecting local schools, health facilities, and job centers. This project provides a safer environment for pedestrians and bicyclists, builds on existing and forthcoming funded active transportation infrastructure projects, connects to public transit and key land uses, enhances public safety, and spurs economic growth.	\$47,566,000	ATP: \$38,559,000 Local Match: \$8,967,000 Total funding: \$47,566,000		Active Transportation Program Cycle 6	CTC Allocation approved for PA/ED in August 2023.	0% Pre-Design (Active)	11	Street Services Forces	Shirley Lau		DOT, BSL, DWP, BOE
39	SRTS Berendo Middle and Leo Polti, Hoover Street, and Magnolia Avenue Elementary Schools Project	Pedestrian and cyclist improvements including curb extensions, traffic circles, pedestrian spaces, a raised crosswalk, pedestrian-activated flashing beacons, accessible pedestrian signals, ramps, speed humps, and new bicycle facilities.	\$11,057,000	ATP: \$9,951,000 TGF: \$1,106,000 Total funding: \$11,057,000		ATP Cycle 5	PreDesign has started and is ongoing.	5% PreDesign (Active)	1	Other	Shirley Lau	ATPL-5006(930)	DOT, BSL, DWP
40	Vermont Ave Bus Stop Improvements - MLK to Wilshire Bl**	Bus stop improvements along Vermont Ave.	\$684,094	Metro LTF: \$547,275 Prop C: \$136,819 Total funding: \$684,094		2015 Call for Projects	Design is ongoing.	60% Design (Active)	1, 8, 9, 10	Street Services Forces	Derrick Lee		DOT, BSL, DWP
41	Vineyard Walkway and Median Improvements	Median refurbishment	\$975,657	CRA/LA: \$975,657 Total funding: \$975,657		CRA/LA Excess Bond Proceeds	Construction is ongoing.	25% Construction (Active)	2, 4	Street Services Forces	Shirley Lau		
42	Walk Picol A Catalyst for Community Vitality & Con**	Pedestrian/bike-friendly improvements on Pico Bl/Tennessee Ave to strengthen community vitality and connectivity to bus stops and the Expo/Sepulveda & Westwood rail stops.	\$2,301,243	CMAQ: \$1,840,994 TGF: \$460,249 Total funding: \$2,301,243		2013 Metro Call for Projects	Construction is ongoing.	35% Construction (Active)	5	Street Services Forces	Shirley Lau	CML-5006(862)	
43	Washington Bl Transit Enhancements Phase 2**	Streetscape improvements on Washington Bl between Hooper Ave and Alameda St and on Long Beach St.	\$2,294,820	Prop C: \$803,187 CMAQ: \$1,491,633 Total funding: \$2,294,820		2011 Call for Projects/CRA	CRA Project, C.F. 12-0014-S20. Design is complete.	100% Design (Active)	9, 14	Street Services Forces	Shirley Lau	CML-5006(856)	
44	Western Ave Bus Stop Improvements - 10 Fwy to Wilshire Bl**	Bus stop improvements along Western Ave.	\$684,094	Metro LTF: \$547,275 PropC: \$136,819 Total funding: \$684,094		2015 Call for Projects	Design is ongoing.	90% Design (Active)	10	Street Services Forces	Shirley Lau		
45	Western Our Way: Walk and Wheel Improvements	Western Our Way is a community-informed active transportation project with urgently-needed improvements spanning 4-1/2 miles of Western Avenue, such as curb extensions, new and upgraded traffic signals, pedestrian-level lighting, shade trees, upgraded curb ramps, and high visibility crosswalks, and nearly 7 miles of a new neighborhood bike network consisting of diverters, speed humps, and neighborhood traffic circles. These traffic calming measures implement the City's Mobility Plan 2035 Neighborhood Enhanced Network, and provide improved access to many local schools, parks, and community facilities.	\$47,765,000	ATP: \$37,737,000 Local Match: \$10,028,000 Total funding: \$47,765,000		Active Transportation Program Cycle 6	CTC Allocation approved for PA/ED in August 2023.	0% Pre-Design (Active)	11	Street Services Forces	Shirley Lau		DOT, BSL, DWP, BOE
46	Westminster Elementary School - Federal SRTS Cycle**	Installation of pedestrian safety improvements in the vicinity of the school.	\$622,000	SafeRt: \$622,000 Total funding: \$622,000		SRTS Cycle 2	Construction is ongoing.	5% Construction (Active)	11	Street Services Forces	Shirley Lau	SRTSL-5006(655)	
47	Wilbur & Portola Elementary Schools - Federal SRTS**	Installation of pedestrian safety improvements in the vicinity of the school.	\$435,000	SafeRt: \$435,000 Total funding: \$435,000		SRTS Cycle 2	Construction is ongoing.	5% Construction (Active)	3	Street Services Forces	Shirley Lau	SRTSL-5006(657)	

48	Wilmington Safe Streets: A People First Approach	The Wilmington Safe Streets Project will benefit residents who are disproportionately affected by environmental justice issues stemming from surrounding industrial land uses (2 of the largest US ports, 4 major oil refineries, 4 asphalt refiners, and a large oil field) as well as 3 freeways and the Alameda Corridor (intercontinental freight rail corridor). The Anaheim Street portion of the Project is listed in LA's High-Injury Network (HIN), with 7 pedestrian fatalities occurring within the last 8 years. According to the Healthy Place Index (HPI), the project area has a higher percentage of workers (16 years or older) who commute to work by transit, walking, or cycling than 62-67.2% of other California census tracts. To improve traffic safety and public health conditions, the ATP project focuses on over seven miles of eight key neighborhood streets, in addition to nearly two miles of active transportation improvements along Wilmington. These include Class II/III/IV bicycle facilities, new raised bike medians, neighborhood traffic circles, pedestrian refuge islands, bus stop islands, bicycle crossings, bike boxes, and two-stage bike turn boxes along with pedestrian-level lighting, shade trees, and improved sidewalks and curb ramps.	\$40,784,000	ATP: \$32,331,000 Local Match: \$8,453,000 Total funding: \$40,784,000		Active Transportation Program Cycle 6	CTC Allocation approved for PA/ED in August 2023.	0% Pre-Design (Active)	15	Street Services Forces	Shirley Lau	DOT, BSL, DWP, BOE
49	Woodlawn Ave Triangle Median Safety Improvements	Safety enhancements to the existing median at Woodlawn Ave Triangle Median	\$376,212	TFAR: \$150,000 SB1: \$226,212 Total funding: \$150,000		TFAR	Design is complete. Ready for construction.	100% Design (Active)	9	Street Services Forces	Shirley Lau	
			<b>\$537,407,334</b>		<b>\$ 1,279,000</b>							

STPOC\_August 2023 Gantt for BSS



Critical Progress		Manual Task		Baseline		Summary Progress		External Tasks		Inactive Summary	
Task		Start-only		Baseline Split		Summary		External Milestone		Deadline	
Split		Finish-only		Baseline Milestone		Manual Summary		Inactive Task			
Task Progress		Duration-only		Milestone		Project Summary		Inactive Milestone			



STPOC\_August 2023 Gantt for BSS

ID	Task Name	Start	Finish	1st Quarter				2nd Quarter				3rd Quarter				4th Quarter				1st Quarter				2nd Quarter				3rd Quarter				4th Quarter				1st Qua
				Jan	Feb	Mar	Apr	May	Jun	Jul	Aug	Sep	Oct	Nov	Dec	Jan	Feb	Mar	Apr	May	Jun	Jul	Aug	Sep	Oct	Nov	Dec	Jan	Feb	Mar	Apr	May	Jun	Jul	Aug	Sep
35	Project Approval/Environmental Document	Thu 9/1/22	Fri 3/1/24	65%																																
36	<b>El Sereno Active Transportation &amp; Transit Connectivity Enhanc</b>	<b>Thu 12/1/22</b>	<b>Tue 4/30/24</b>	52%																																
37	Pre-Design	Thu 12/1/22	Tue 4/30/24	52%																																
38	Elmer Ave Pedestrian Improvements	Tue 5/16/23	Tue 5/16/23	100%																																
39	<b>Huntington Dr Sidewalk Improvements</b>	<b>Thu 7/1/21</b>	<b>Fri 12/29/23</b>	86%																																
40	Construction	Thu 7/1/21	Fri 12/29/23	86%																																
41	<b>Imperial Highway Bike Lanes</b>	<b>Fri 9/1/23</b>	<b>Mon 9/30/24</b>	0%																																
42	Construction	Fri 9/1/23	Mon 9/30/24	0%																																
43	<b>L.A. River Bike Path - Phase IV</b>	<b>Fri 7/1/22</b>	<b>Sun 3/31/24</b>	66%																																
44	Design	Fri 7/1/22	Sun 3/31/24	66%																																
45	<b>LANI Santa Monica</b>	<b>Mon 9/19/22</b>	<b>Fri 12/29/23</b>	73%																																
46	Construction	Mon 9/19/22	Fri 12/29/23	73%																																
47	<b>Lankershim Plaza Improvements</b>	<b>Fri 9/1/23</b>	<b>Fri 12/29/23</b>	0%																																
48	Construction	Fri 9/1/23	Fri 12/29/23	0%																																
49	<b>Maya Corridor Streetscape</b>	<b>Fri 9/1/23</b>	<b>Fri 12/29/23</b>	0%																																
50	Construction	Fri 9/1/23	Fri 12/29/23	0%																																
51	<b>Melrose Ave - Fairfax Ave to Highland Ave Pedestrian Improvements</b>	<b>Mon 6/27/22</b>	<b>Fri 10/27/23</b>	87%																																
52	Construction	Mon 6/27/22	Fri 10/27/23	87%																																
53	<b>Mission Mile: Sepulveda Visioning for a Safe and Active Community</b>	<b>Thu 6/1/23</b>	<b>Thu 7/1/27</b>	23%																																
54	Project Approval/Environmental Document	Thu 6/1/23	Fri 5/31/24	23%																																
55	<b>Martin Luther King (MLK) BI Streetscape</b>	<b>Fri 7/1/22</b>	<b>Wed 7/31/24</b>	55%																																
56	Design	Fri 7/1/22	Wed 7/31/24	55%																																
57	Normandie Beautiful: Creating Neighborhood Connections in Sc	Wed 11/1/23	Wed 7/15/26	97%																																
58	<b>Normandie Beautiful Streetscape</b>	<b>Thu 12/1/22</b>	<b>Thu 8/31/23</b>	97%																																
59	Design	Thu 12/1/22	Thu 8/31/23	97%																																
60	<b>Northeast LA Active Transportation &amp; Transit Connectivity Enhancements</b>	<b>Wed 3/1/23</b>	<b>Fri 9/29/23</b>	83%																																
61	Pre-Design	Wed 3/1/23	Fri 9/29/23	83%																																
62	<b>Orange Line Extension-Sherman Wy Station Ped. Impr</b>	<b>Wed 10/20/21</b>	<b>Fri 12/29/23</b>	84%																																
63	Construction	Wed 10/20/21	Fri 12/29/23	84%																																
64	Osborne St: Path to Park Access Project	Wed 11/15/23	Thu 7/1/27	98%																																
65	<b>Parthenia St and Sepulveda BI Streetscape Improvements</b>	<b>Fri 7/1/22</b>	<b>Thu 11/30/23</b>	98%																																
67	<b>Ricardo Lizarraga Elem. School</b>	<b>Mon 6/27/22</b>	<b>Fri 9/1/23</b>	98%																																
68	Design	Mon 6/27/22	Fri 9/1/23	98%																																
69	San Fernando Rd Bikepath Phase IIIA Construction	Tue 8/20/19	Fri 12/29/23	92%																																

Critical Progress		Manual Task		Baseline		Summary Progress		External Tasks		Inactive Summary	
Task		Start-only		Baseline Split		Summary		External Milestone		Deadline	
Split		Finish-only		Baseline Milestone		Manual Summary		Inactive Task			
Task Progress		Duration-only		Milestone		Project Summary		Inactive Milestone			

STPOC\_August 2023 Gantt for BSS

ID	Task Name	Start	Finish	1st Quarter				2nd Quarter				3rd Quarter				4th Quarter				1st Quarter				2nd Quarter				3rd Quarter				4th Quarter				1st Qu
				Jan	Feb	Mar	Apr	May	Jun	Jul	Aug	Sep	Oct	Nov	Dec	Jan	Feb	Mar	Apr	May	Jun	Jul	Aug	Sep	Oct	Nov	Dec	Jan	Feb	Mar	Apr	May	Jun	Jul	Aug	Sep
70	San Fernando Rd Bikepath Phase IIIB Construction	Tue 8/20/19	Fri 12/29/23																													92%				
71	Skid Row Connectivity and Safety Project	Wed 11/15/23	Fri 7/30/27																													0%				
72	<b>SRTS Berendo Middle and Leo Politi, Hoover Street, and Magnolia Avenue Elementary Schools Project</b>	<b>Wed 3/1/23</b>	<b>Tue 10/31/23</b>																													73%				
73	Pre-design	Wed 3/1/23	Tue 10/31/23																													73%				
74	<b>Vermont Ave Bus Stop Improvements - MLK to Wilshire Bl</b>	<b>Mon 1/3/22</b>	<b>Fri 12/29/23</b>																													83%				
75	Design	Mon 1/3/22	Fri 12/29/23																													83%				
76	<b>Vineland Walkway and Median Improvements</b>	<b>Wed 6/1/22</b>	<b>Tue 10/31/23</b>																													87%				
77	Construction	Wed 6/1/22	Tue 10/31/23																													87%				
78	<b>Walk Pico! A Catalyst for Community Vitality &amp; Con</b>	<b>Tue 5/31/22</b>	<b>Mon 6/3/24</b>																													62%				
79	Construction	Tue 5/31/22	Mon 6/3/24																													62%				
80	<b>Washington Bl Transit Enhancements Phase 2</b>	<b>Thu 7/1/21</b>	<b>Fri 9/29/23</b>																													96%				
81	Design	Thu 7/1/21	Fri 9/29/23																													96%				
82	<b>Western Ave Bus Stop Improvements - 10 Fwy to Wilshire Bl</b>	<b>Tue 3/1/22</b>	<b>Tue 10/31/23</b>																													89%				
83	Design	Tue 3/1/22	Tue 10/31/23																													89%				
84	Western Our Way: Walk and Wheel Improvements	Fri 8/18/23	Fri 6/4/27																													0%				
85	<b>Westminster Elementary School - Federal SRTS Cycle</b>	<b>Sat 7/1/23</b>	<b>Fri 12/1/23</b>																													36%				
86	Construction	Sat 7/1/23	Fri 12/1/23																													36%				
87	<b>Wilbur &amp; Portola Elementary Schools - Federal SRTS</b>	<b>Mon 7/3/23</b>	<b>Fri 12/1/23</b>																													35%				
88	Construction	Mon 7/3/23	Fri 12/1/23																													35%				
89	Wilmington Safe Streets: A People First Approach	Thu 2/1/24	Fri 6/30/28																													0%				
90	<b>Woodlawn Ave Triangle Median Safety Improvements</b>	<b>Fri 9/1/23</b>	<b>Tue 10/31/23</b>																													0%				
91	Construction	Fri 9/1/23	Tue 10/31/23																													0%				

Critical Progress		Manual Task		Baseline		Summary Progress		External Tasks		Inactive Summary	
Task		Start-only		Baseline Split		Summary		External Milestone		Deadline	
Split		Finish-only		Baseline Milestone		Manual Summary		Inactive Task			
Task Progress		Duration-only		Milestone		Project Summary		Inactive Milestone			