

The seal of the City of Los Angeles is a large, circular emblem in the background. It features a central shield with a grizzly bear, a grizzly bear, and a grizzly bear. The shield is surrounded by a wreath and the text "CITY OF LOS ANGELES" at the top and "FOUNDED 1781" at the bottom.

OVERVIEW OF THE 2015-16 PROPOSED BUDGET

Miguel A. Santana
City Administrative Officer

April 28, 2015

SUMMARY

2015-16 Proposed Budget Builds on the Progress the City has Made Since the Great Recession

- Fully complies with financial policies
- Invests in core services
- Uses strong revenue growth prudently
- Stays on track to eliminate the structural deficit

BUDGET AT A GLANCE

Budget at a Glance

TOTAL PROPOSED 2015-16 CITY GOVERNMENT

	Appropriations (\$ Millions)	Authorized Positions
<u>I. Proprietary Departments</u>		
Airports	\$ 4,652.7	3,773
Harbor	\$ 1,004.6	998
Water and Power	\$ 8,139.2	10,008
<i>Total</i>	<i>\$ 13,796.5</i>	<i>14,779</i>
<u>II. General City Budget</u>		
General Fund	\$ 5,392.2	22,308*
Special Funds	\$ 3,176.1	10,254
<i>Total</i>	<i>\$ 8,568.3</i>	<i>32,562</i>
<u>III. Grants and other Non-Budgeted Funds</u>		
<i>Total</i>	<i>\$ 1,365.6</i>	<i>-</i>
Grand Total	\$ 23,730.4	47,341

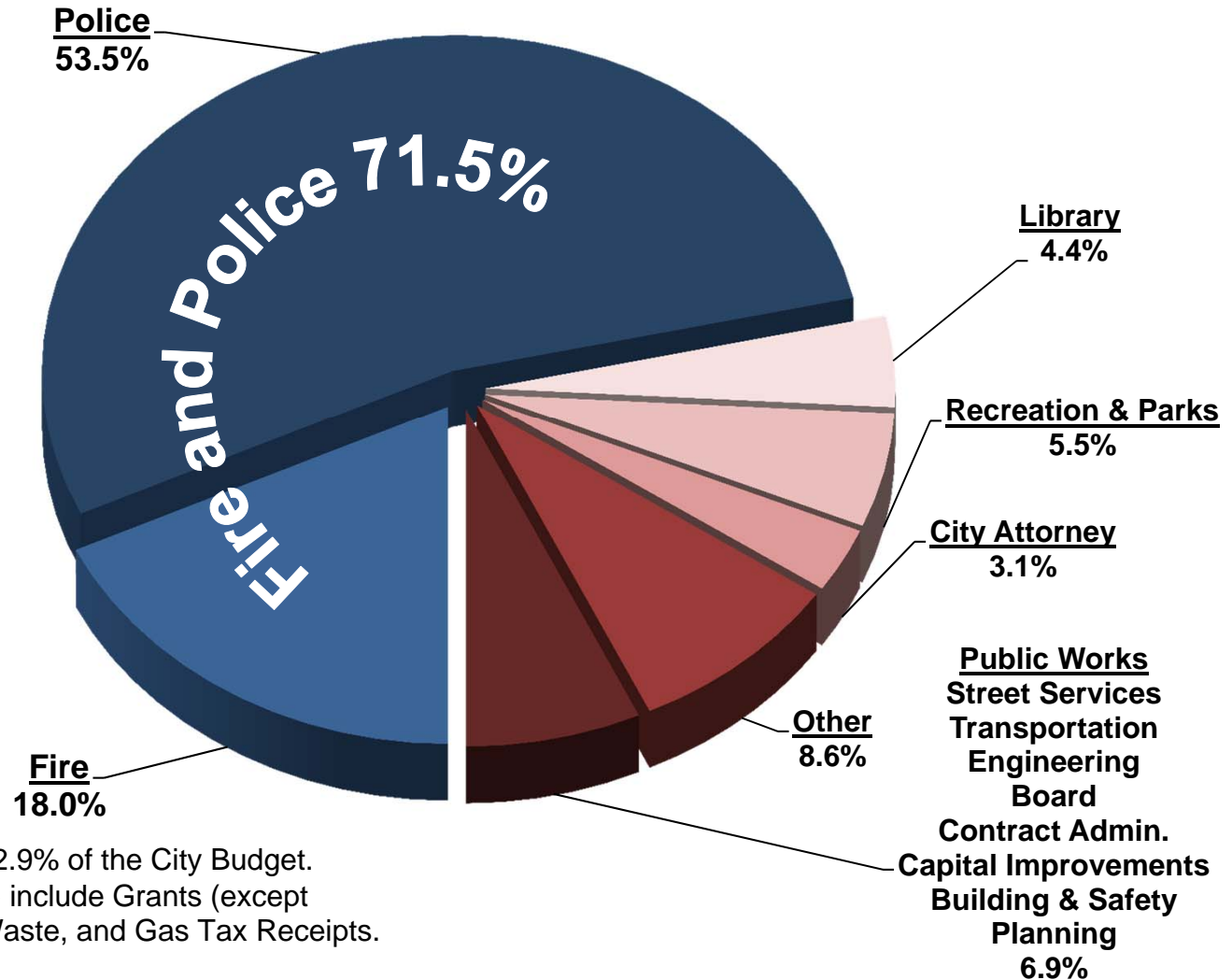
*Sworn staff represents 60 percent of General Fund positions.

BUDGET AT A GLANCE

Budget Component	Budget (\$ Millions)			Authorized Positions		
	Adopted 2014-15	Proposed 2015-16	Percent Change	Adopted 2014-15	Proposed 2015-16	Percent Change
General Fund	\$ 5,138.3	\$ 5,392.2	4.9%	21,813	22,308	2.3%
Special Funds	\$ 2,984.6	\$ 3,176.1	6.4%	10,062	10,254	1.9%
Total	\$ 8,122.9	\$ 8,568.3	5.5%	31,875	32,562	2.2%

BUDGET AT A GLANCE

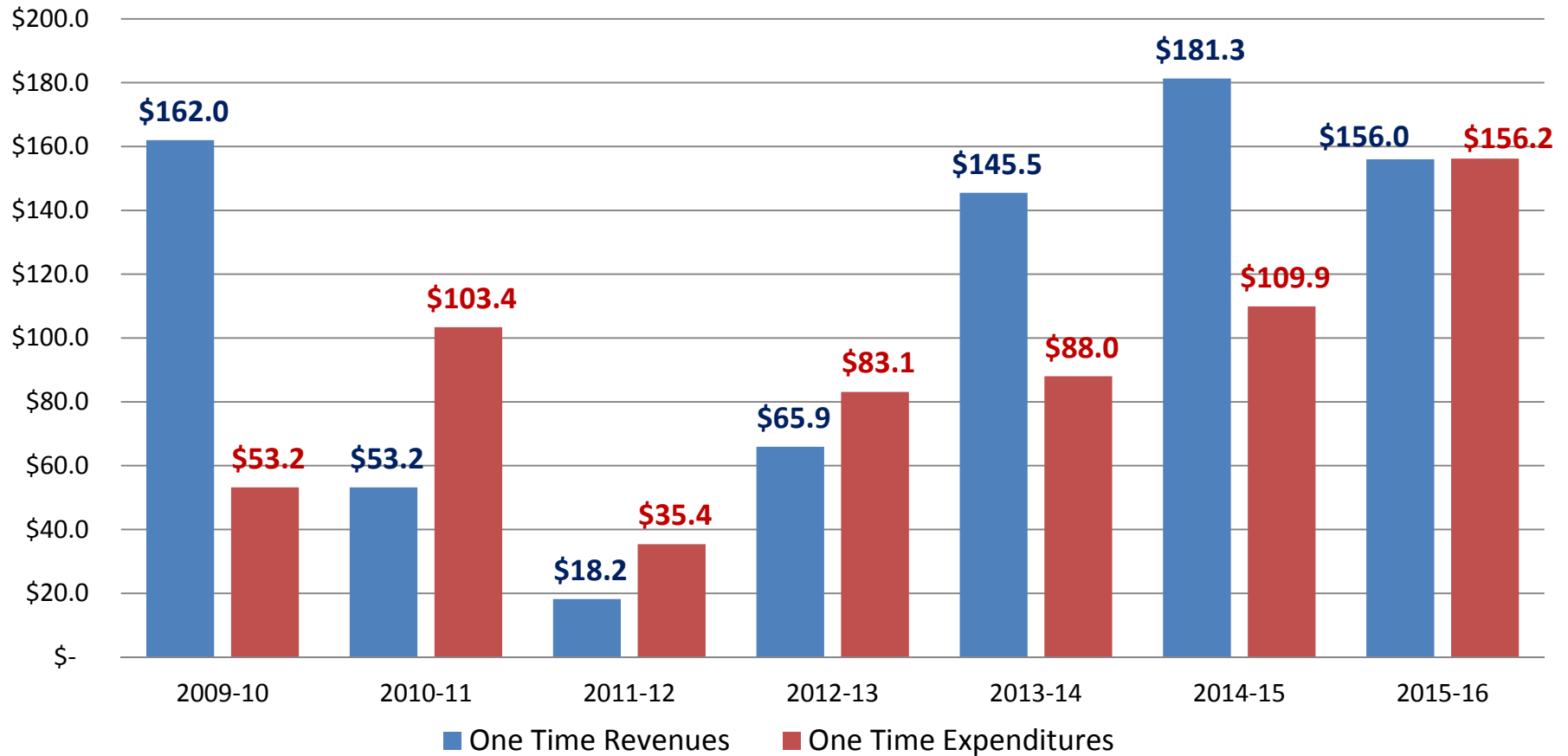
2015-16 Budget Unrestricted Revenues \$4.5 Billion



Unrestricted Revenues are 52.9% of the City Budget.
Restricted Revenues (47.1%) include Grants (except
Police Dept.), Sewer, Solid Waste, and Gas Tax Receipts.

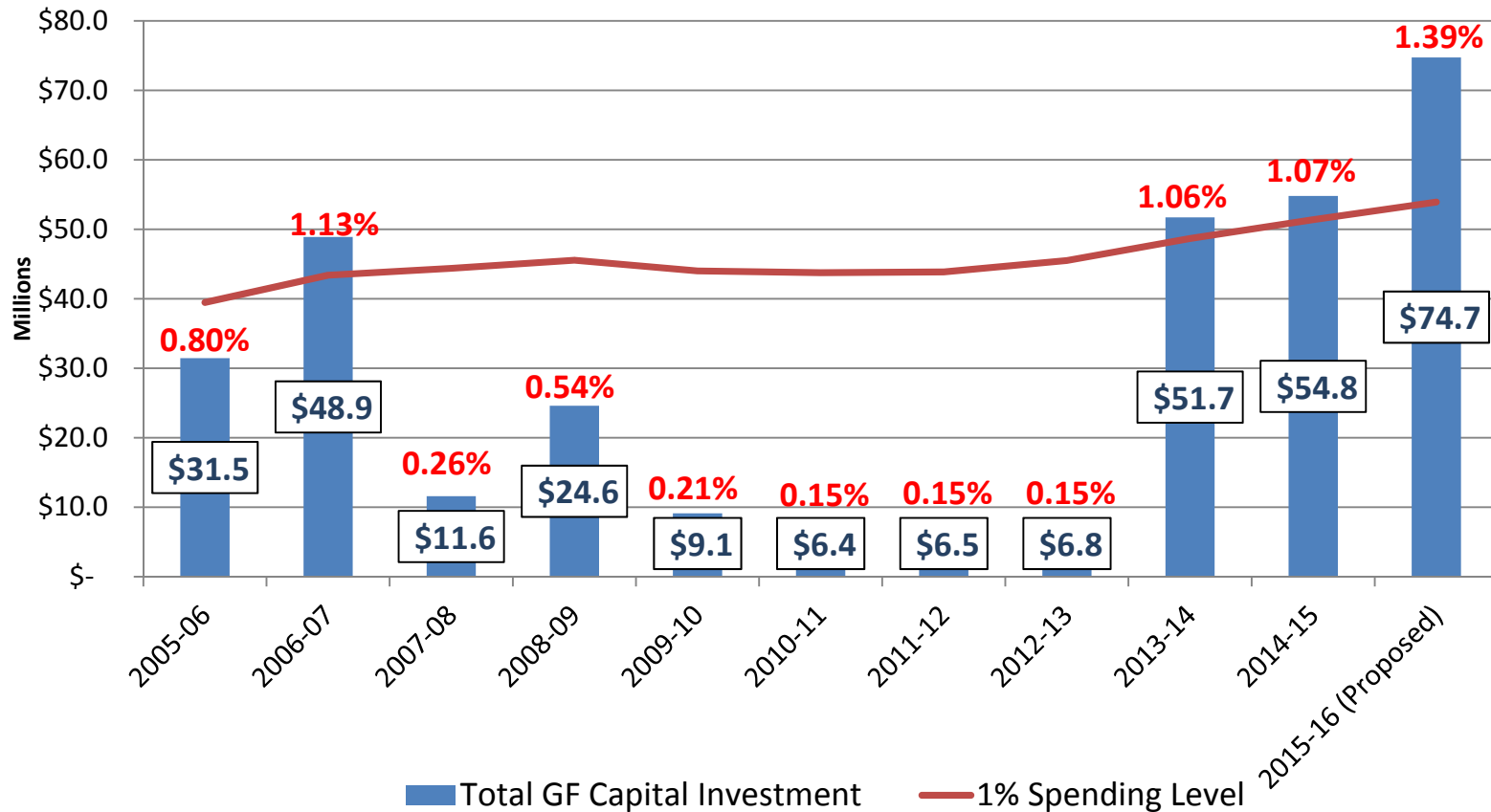
FINANCIAL POLICY COMPLIANCE

One-Time Revenues vs. One-Time Expenditures Proposed Budgets



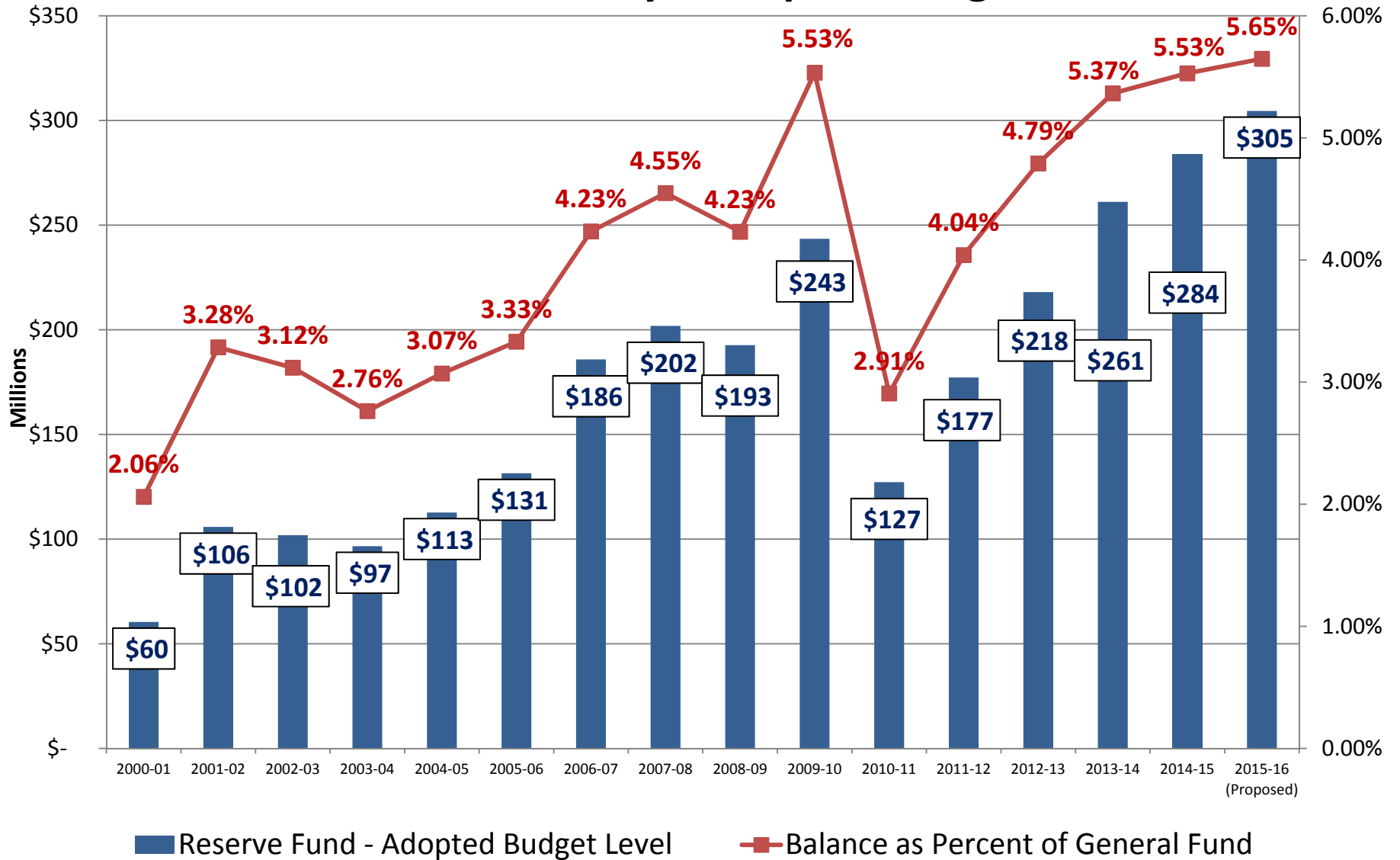
FINANCIAL POLICY COMPLIANCE

Capital Investment as Percentage of General Fund Revenue



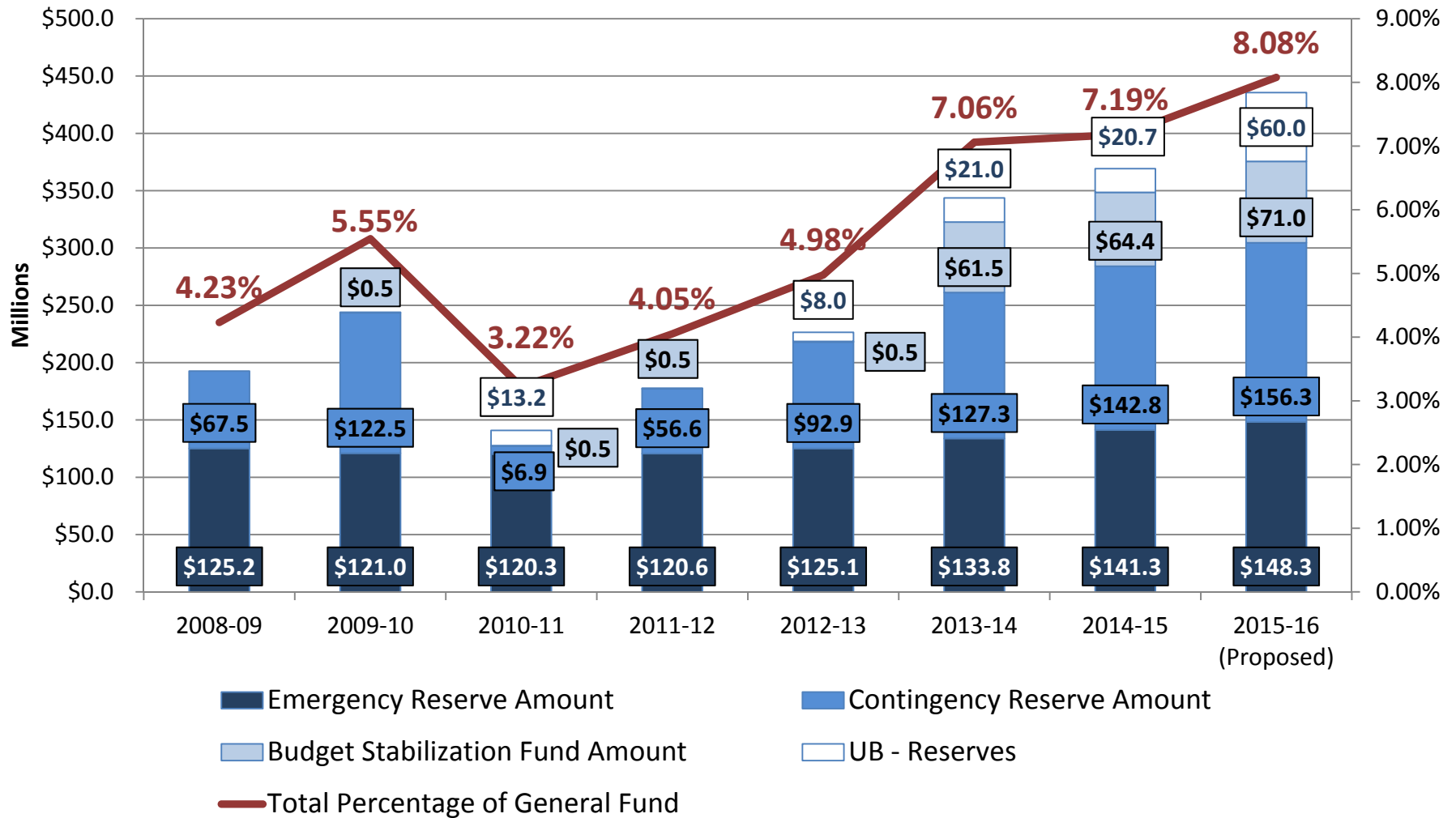
FINANCIAL POLICY COMPLIANCE

Reserve Fund History - Adopted Budget Level



FINANCIAL POLICY COMPLIANCE

Adopted Budget Reserves, Including Reserve Fund, Budget Stabilization Fund, and UB - Reserves



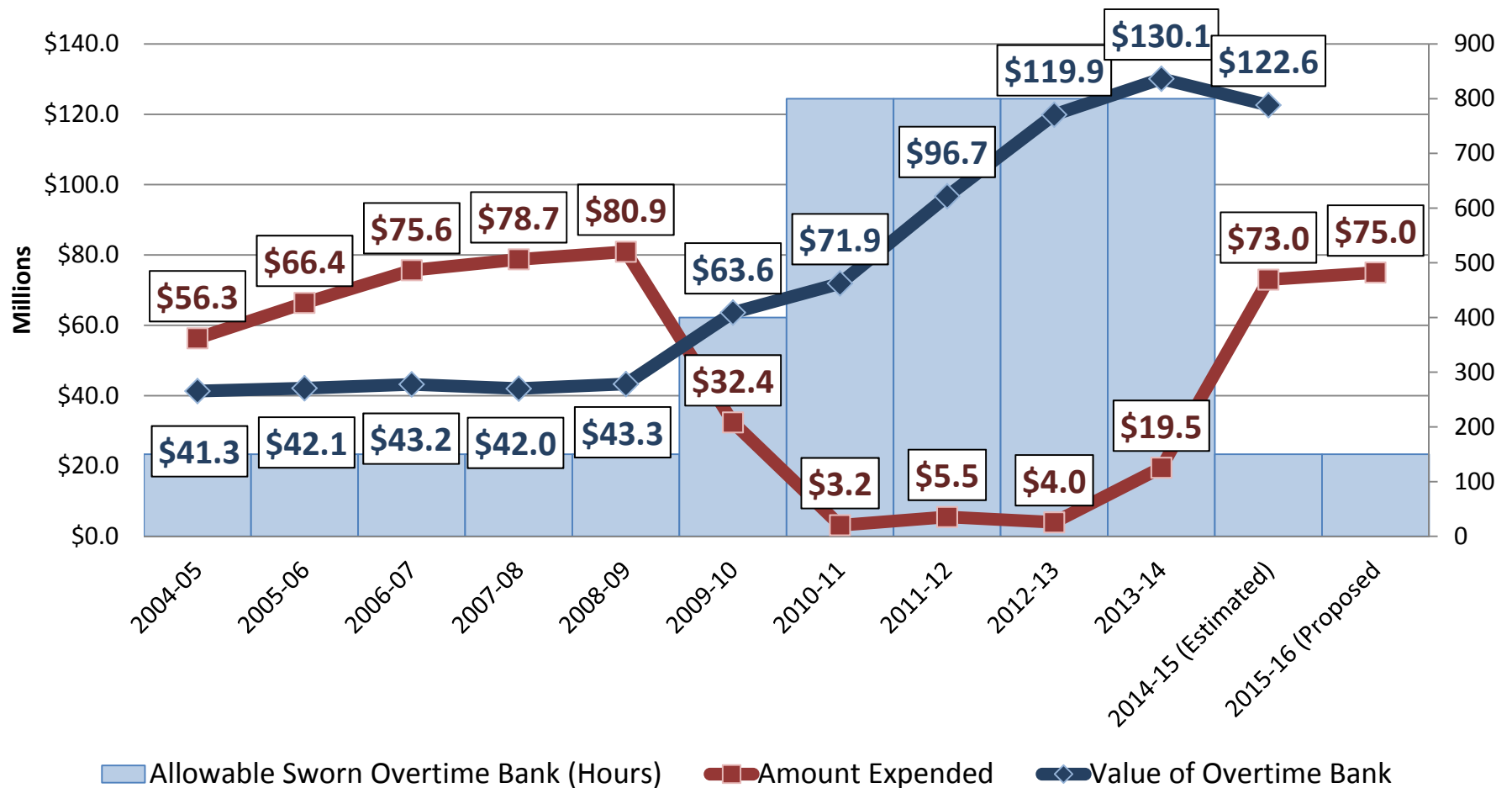
INVESTING IN CORE SERVICES

- Homelessness:
 - Funds Coordinated Entry System
 - \$10 million for Affordable Housing Trust Fund
- Fire – Fully funds:
 - Ambulance augmentation
 - Five recruit classes
- Operation Clean Streets
- Police:
 - Fully funds overtime
 - Body cameras
- Sidewalks - \$31 million
- Streets – \$62 million for 2,400 miles
- Invests in Information Technology
 - Supply Management System
 - Mainframe migration
 - Customer Relationship Management System
 - Cyber security

INVESTING IN CORE SERVICES

Sworn Overtime Expended (Non-Reimbursable)/Overtime Bank Value

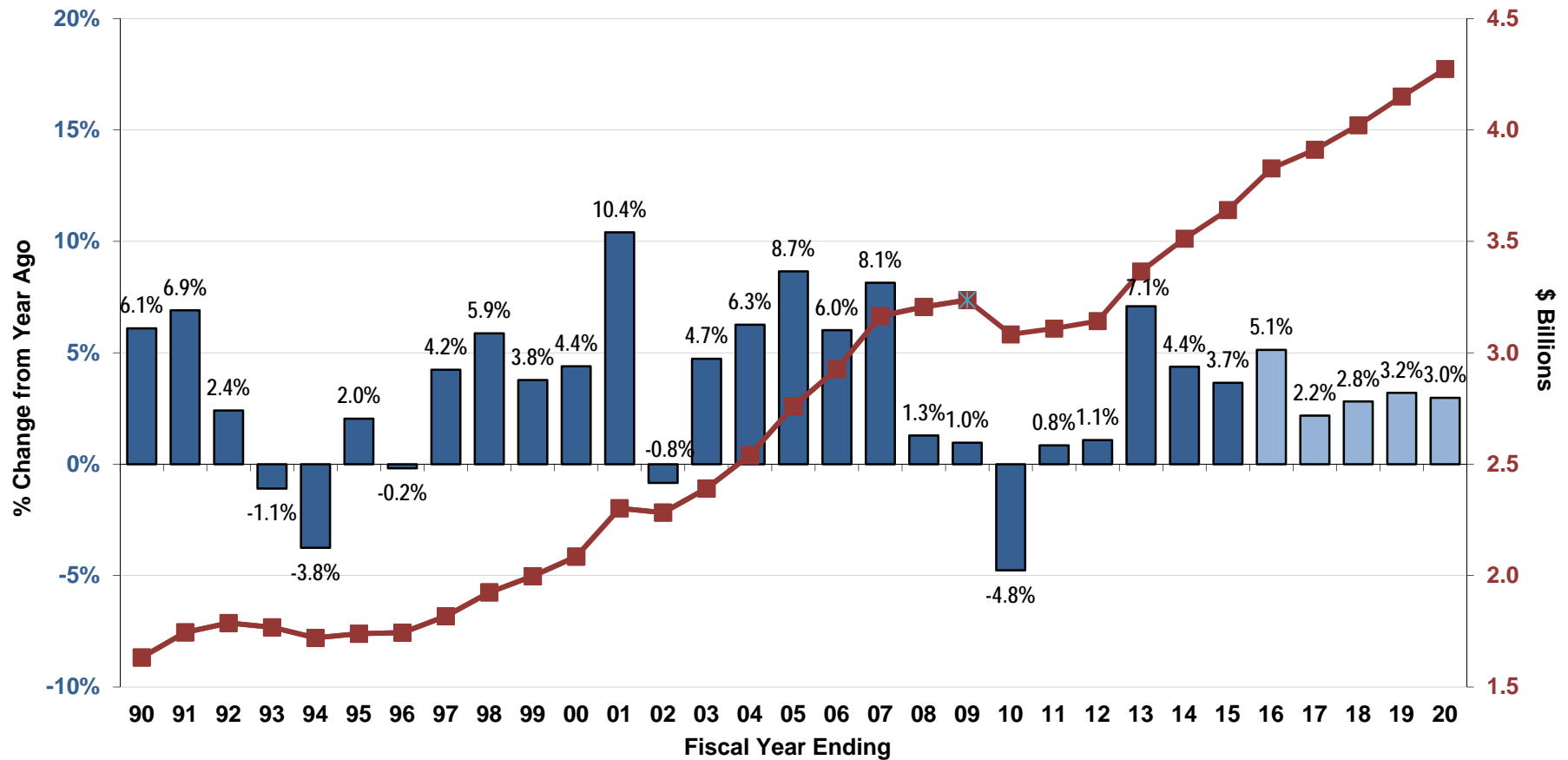
Actual 2004 through 2014, Estimated 2014-15, Proposed 2015-16



SOLID REVENUES

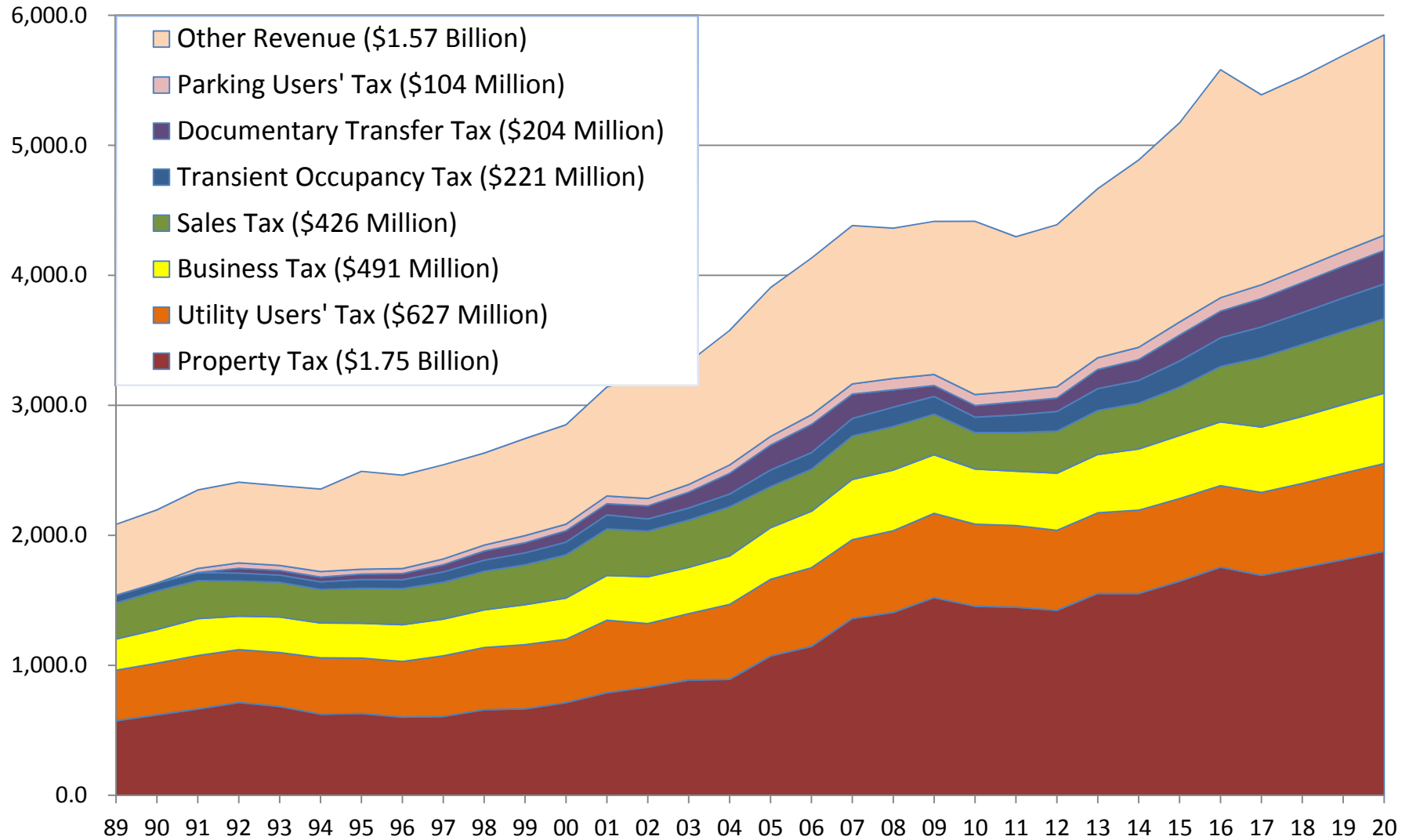
Seven General Fund Taxes

Property (includes VLF), Utility, Business, Sales, Hotel, Documentary, and Parking Taxes



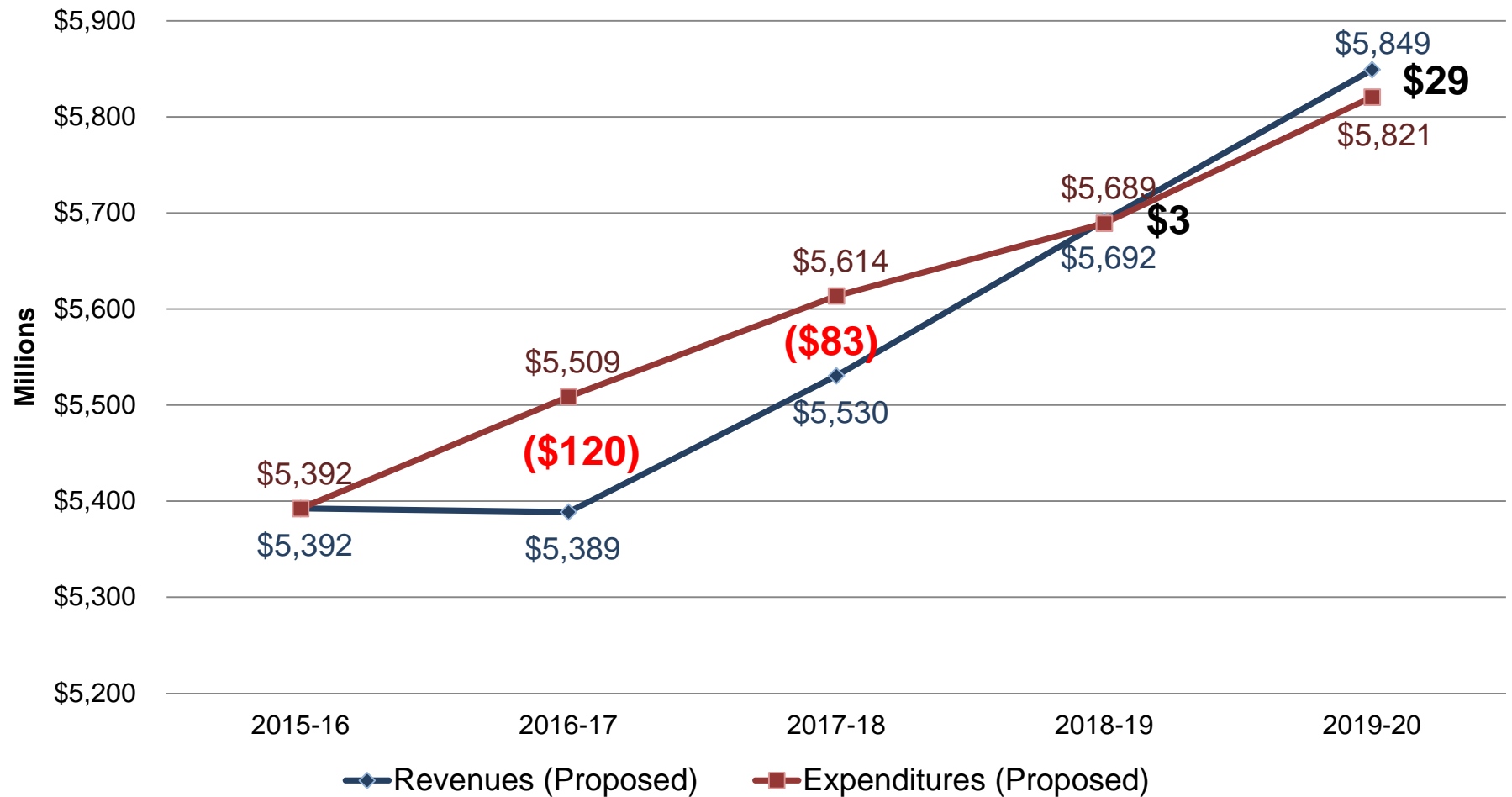
SOLID REVENUES

City General Fund Revenue (\$ Millions)



CLOSING THE STRUCTURAL DEFICIT

Four Year Budget Outlook 2015-16 to 2019-20 Surplus (Deficit)



CLOSING THE STRUCTURAL DEFICIT

Cumulative Four-Year Deficit by Year of Outlook (Fiscal Years Included in Outlook)

