



LOS ANGELES COMMUNITY COLLEGE DISTRICT

3RD LOS ANGELES REGION INVESTORS CONFERENCE 2016

**FRANCISCO C. RODRIGUEZ
CHANCELLOR, LOS ANGELES CCD
MARCH 31, 2016**



LOS ANGELES COMMUNITY COLLEGE DISTRICT:

The Los Angeles Community College District is one of the largest community college districts in the United States.

The LACCD consists of nine colleges and covers an area of more than 882 square miles.

OUR COLLEGES:

Educational Services Center
Los Angeles, CA

East Los Angeles College
Monterey Park, CA

Los Angeles City College
Los Angeles, CA

Los Angeles Harbor College
Wilmington, CA

Los Angeles Mission College
Sylmar, CA

Los Angeles Pierce College
Woodland Hills

Los Angeles Southwest College
Los Angeles, CA

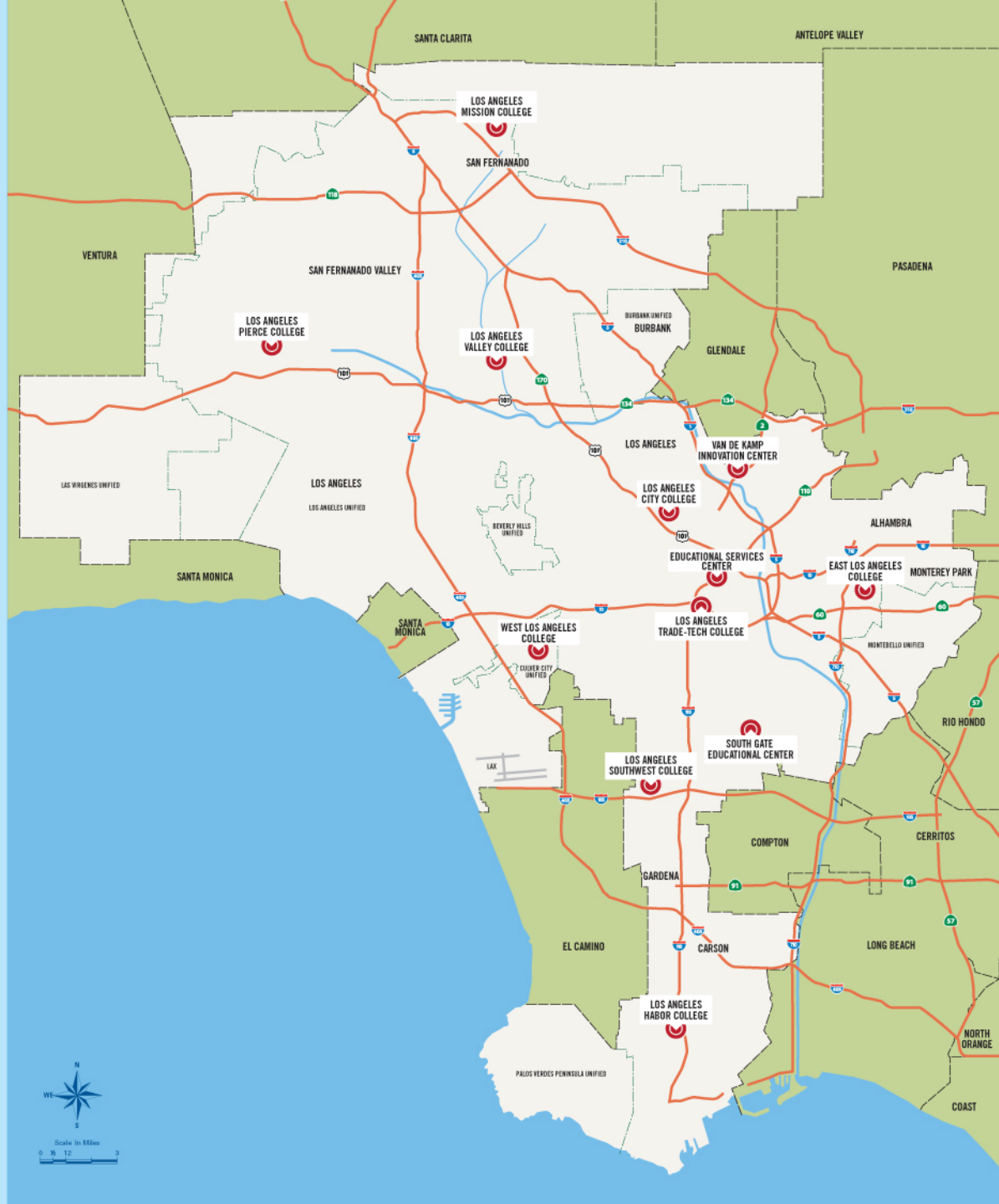
Los Angeles Trade-Technical College
Los Angeles, CA

Los Angeles Valley College
Valley Glen, CA

West Los Angeles College
Culver City, CA

Van de Kamp Innovation Center
Los Angeles, CA

South Gate Educational Center
South Gate, CA



MISSION AND VISION STATEMENT

The mission of the Los Angeles Community College District is to provide our students with an excellent education that prepares them to transfer to four-year institutions, successfully complete workforce development programs designed to meet local and statewide needs, and pursue opportunities for lifelong learning and civic engagement.

The LACCD will strive to become a national leader in student success by providing high quality, accessible, educational opportunities across the greater Los Angeles area that change students' lives, enrich the area's many diverse cultures, and strengthen the regional economy. The District will do so continuing to provide a culture of continuous improvement and by closing persistent equity gaps.





BOARD OF TRUSTEES



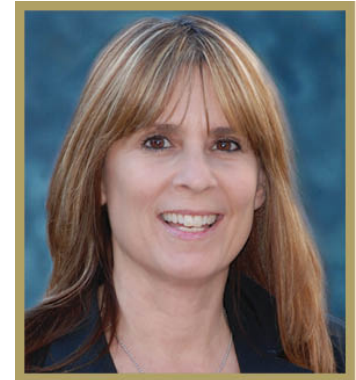
Scott J. Svonkin
President of the Board



Mike Eng
Vice President of the Board



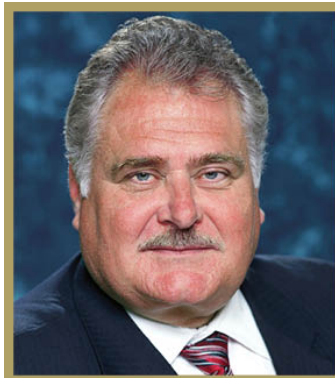
Mike Fong
Member of the Board



Andra Hoffman
Member of the Board



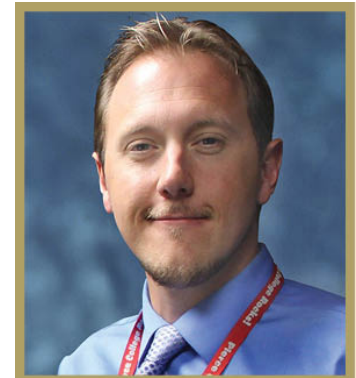
Sydney K. Kamlager
Member of the Board



Ernest H. Moreno
Member of the Board



Nancy Pearlman
Member of the Board



Milo Anderson
Student Member of the Board



COLLEGE PRESIDENTS



Renee Martinez
Los Angeles
City College



Marvin Martinez
East Los Angeles
College



Otto W.K. Lee
Los Angeles
Harbor College



Monte Perez
Los Angeles
Mission College



Kathleen Burke
Los Angeles
Pierce College



Linda D. Rose
Los Angeles
Southwest College



Laurence B. Frank
Los Angeles
Trade-Tech College



**Erika A.
Endrijonas**
Los Angeles
Valley College



Robert Sprague
West Los Angeles
College



LACCD EXECUTIVE STAFF

Dr. Francisco C. Rodriguez

Chancellor

Jeanette L. Gordon

Chief Financial Officer/Treasurer

Dr. Adriana D. Barrera

Deputy Chancellor

Dr. Kevin D. Jeter

General Counsel

Dr. Felicito Cajayon

Vice Chancellor for Economic &
Workforce Development

Dr. Robert Miller

Vice Chancellor for Finance &
Resource Development

Dr. Ryan M. Cornner

Vice Chancellor for Educational
Programs & Institutional
Effectiveness

James D. O'Reilly

Chief Facilities Executive

Dr. Albert J. Román

Vice Chancellor for Human Resources



DISTRICT STRATEGIC PLAN, (2013-17)

Goal 1: Access and Preparation for Success

Improve equitable access; help students attain important early educational momentum points.

Goal 2: Teaching and Learning for Success

Strengthen effective teaching and learning by providing a learner-centered educational environment; help students attain their goals of certificate and degree completion, transfer, and job training and career placement; increase equity in the achievement of these outcomes.

Goal 3: Organizational Effectiveness

Improve organizational effectiveness through data-informed planning and decision-making, process assessment, and professional development.

Goal 4: Resources and Collaboration

Increase and diversify sources of revenue in order to achieve and maintain fiscal stability and to support District initiatives. Enhance and maintain mutually beneficial external partnerships with business, labor, and industry and other community and civic organizations in the greater Los Angeles area.



ROLES OF THE DISTRICT OFFICE

- **Communicate expectations of educational excellence** through the District Strategic Plan
- **Ensure that the colleges receive effective and adequate services** to support the colleges in achieving their missions through centralized and support services
- **Allocate resources** adequate to support the effective operations and sustainability of the colleges through the development of resource allocation models
- **Integrate district and college planning** in order to improve student learning through common metrics and effectiveness reporting
- **Delegate authority to Colleges and College Presidents** to determine needs and develop plans and programs reflective of local communities.

From District Governance and Functions Handbook, 2015





LOS ANGELES COMMUNITY COLLEGE DISTRICT:

The Los Angeles Community College District is one of the largest community college districts in the United States.

The LACCD consists of nine colleges and covers an area of more than 882 square miles.

OUR COLLEGES:

Educational Services Center
Los Angeles, CA

East Los Angeles College
Monterey Park, CA

Los Angeles City College
Los Angeles, CA

Los Angeles Harbor College
Wilmington, CA

Los Angeles Mission College
Sylmar, CA

Los Angeles Pierce College
Woodland Hills

Los Angeles Southwest College
Los Angeles, CA

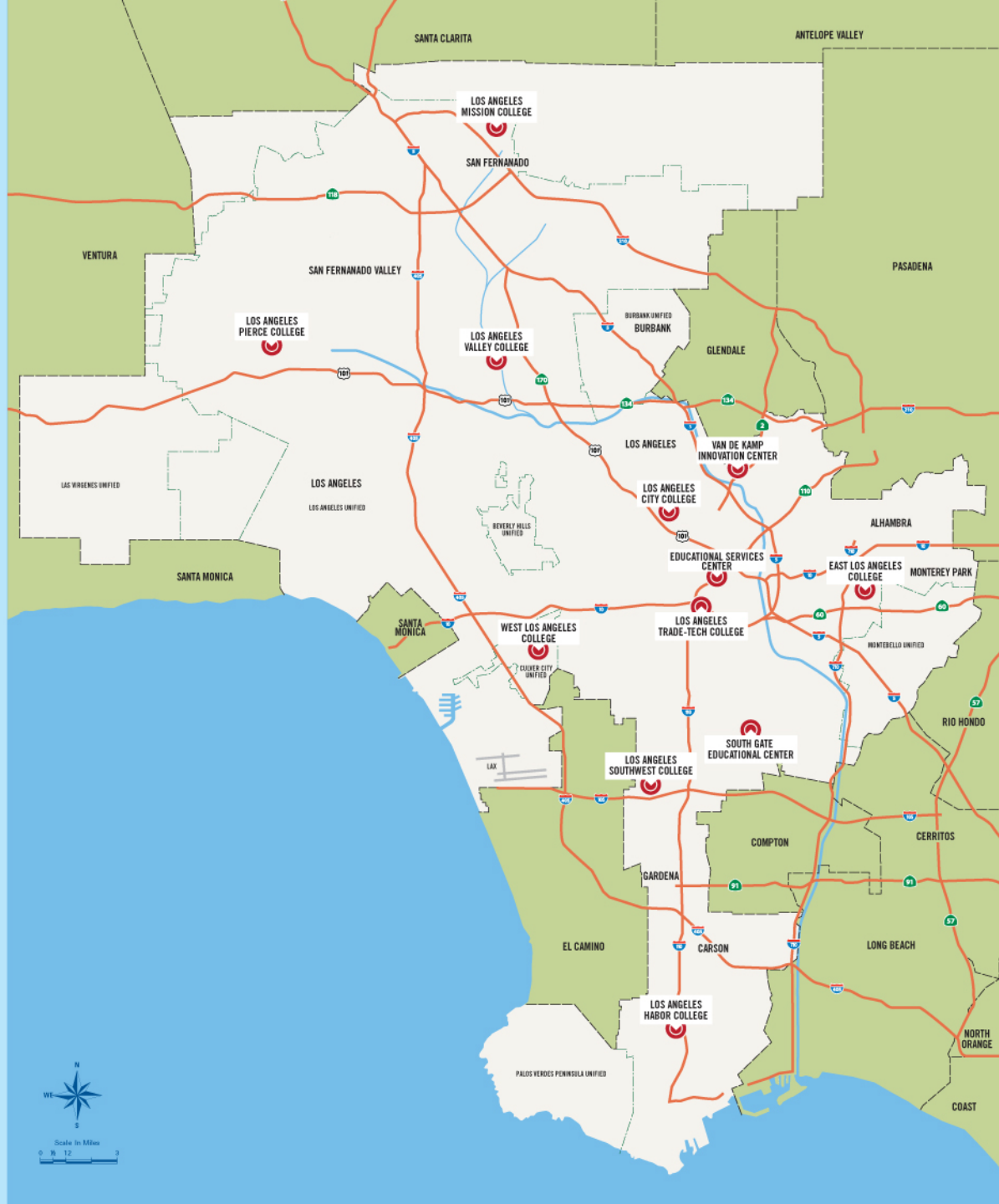
Los Angeles Trade-Technical College
Los Angeles, CA

Los Angeles Valley College
Valley Glen, CA

West Los Angeles College
Culver City, CA

Van de Kamp Innovation Center
Los Angeles, CA

South Gate Educational Center
South Gate, CA



ENROLLMENT - 2014-2015

Los Angeles City College	31,385
East Los Angeles College	55,118
Los Angeles Harbor College	13,517
Los Angeles Mission College	15,143
Los Angeles Pierce College	31,331
Los Angeles Southwest College	12,282
Los Angeles Trade-Technical College	23,179
Los Angeles Valley College	27,880
West Los Angeles College	14,856

TOTAL ENROLLMENT: 225,942



LACCD STUDENT PROFILE - Fall 2015

56.7%	Latino
11.1%	African-American
10.0%	Asian/Pacific Islander
14.9%	White

22.5%	Non-Native English speaking
51%	Below the poverty line
18%	From homes where parents received only elementary education

27.5%	Full Time Students
72.5%	Part Time Students

EDUCATIONAL GOALS - Fall 2015

17.4%	Vocational
49.5%	Transfer
15.3%	General Education
4.1%	Transitional
13.8%	Undecided



DEGREES AND CERTIFICATES CONFERRED

7,248	Associate of Arts or Sciences (2014-15)
5,359	Certificates of 18 or more units (2014-15)
12,607	Total Awards

TRANSFERS TO 4-YEAR INSTITUTIONS

3,935	California State University (2013-14)
920	University of California (2013-14)
254	Private California institutions (2013-14)
5,109	Total Transfers

17,716 completions





EDUCATION TRENDS & ISSUES IN LOS ANGELES

- Accountability Movement
- Achievement/Opportunity Gap
- Anti-Immigrant Sentiment
- Charter School Movement
- Chronic Underfunding from State
- Collective Bargaining/Unions
- Crisis in Public Confidence
- Demographic Shifts
- English-language Learners
- Leadership Turnover: Retirements & Succession Planning
- Overregulation
- Public School and Higher Education Financing
- Poverty of School Children and College Students
- Recovery from Disinvestment Caused by Great Recession
- Rising Health & Benefits Costs
- School/College Board Politics
- Teacher/Faculty Preparation
- Testing to the Standards
- Underpreparedness of Students
- Voter Fatigue







WHAT'S GOING ON AT LACCD?

- The Power of Nine
- Internal Collaboration
- Alignment of Curriculum
- Greater Interdependence
- Disruptive Engagement
- Facilities: Dust and Noise
- External Partnerships
- Crafting a Shared Vision and Responsibility for Student Success





LACCD INITIATIVES



- First-Year Experience
- Transfer to 4-Year
- Workforce Training
- WorkSource Centers
- Veterans Centers
- Faculty Hiring, Project Match
- Faculty Teaching & Learning Academy
- Faculty Development College
- Deans' Academy
- Presidents' Academy
- Campus Safety and Emergency Preparedness

LOCAL BOND FUNDING

Total Voter Approved Measures: \$5.725B*

- 2001 Proposition A: \$1.245 B
- 2005 Proposition AA: \$980 M
- 2008 Measure J: \$3.5B

With Interest, State and Federal Funds: \$6.265B

Contracted: \$5.13B

Remaining To be Contracted: \$1.13B (18%)

Major Buildings Constructed: 117

Major Buildings Renovated: 44

Types of Buildings:

General Classrooms and Labs

Libraries

Student Centers

Athletic Facilities & Fields

Parking Structures

Theater Arts

Child Development Centers

Math & Science

Learning Resource Centers

Performing Arts Centers

Administrative Centers

Technology Centers

*





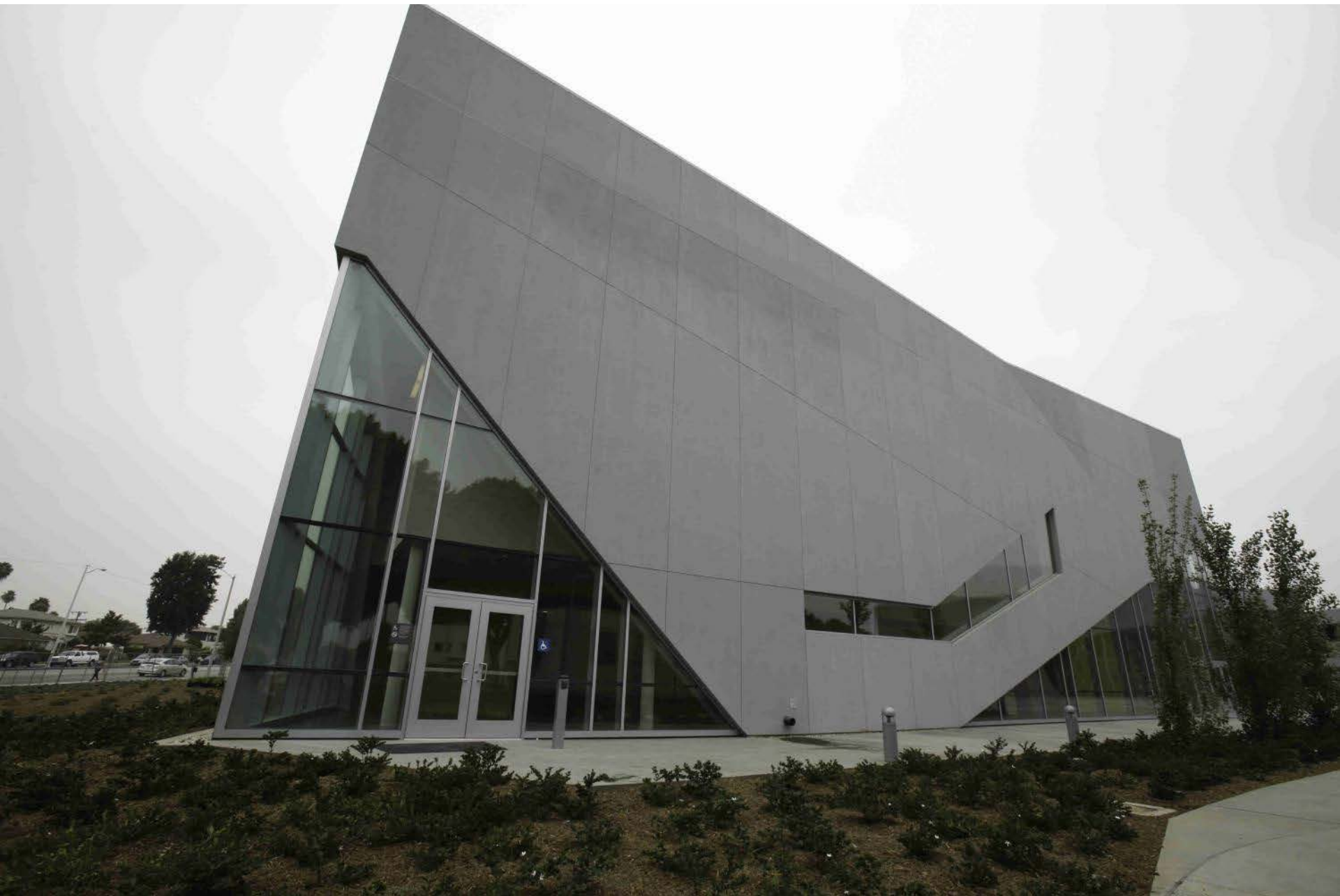
Pierce College Center for the Sciences



Trade Tech Child Development Center & South Campus Buildings



Mission College Family & Consumer Studies



East Los Angeles College Vincent Price Art Museum

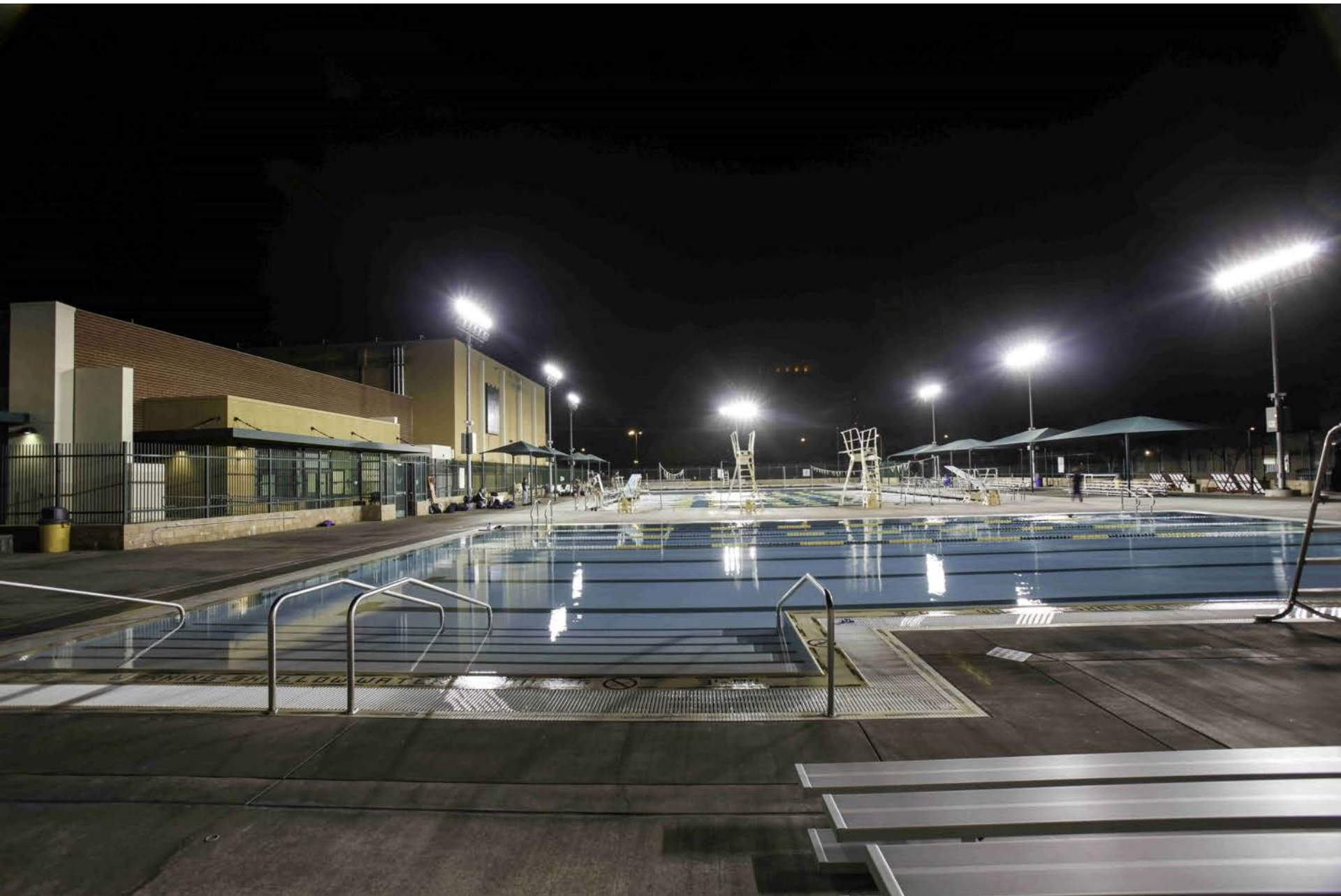


City College Student Union Building

FUTURE NEEDS TO ADDRESS

- **Security Concerns**
- **Health & Safety Requirements**
- **Infrastructure Upgrades**
- **Accessibility Needs**
- **Landscape Improvements**
- **Storm Water Improvements**
- **Water Conservation Projects**
- **Sidewalk & Roadway Improvements**
- **Major Capital Renewals/Repairs**
- **Aligning of the Facilities Master Plan with the Educational Master Plan**
- **Improve Building Efficiencies**
- **Improve Space Utilization**
- **Demolition of Old Structures**
- **Unfunded Projects**



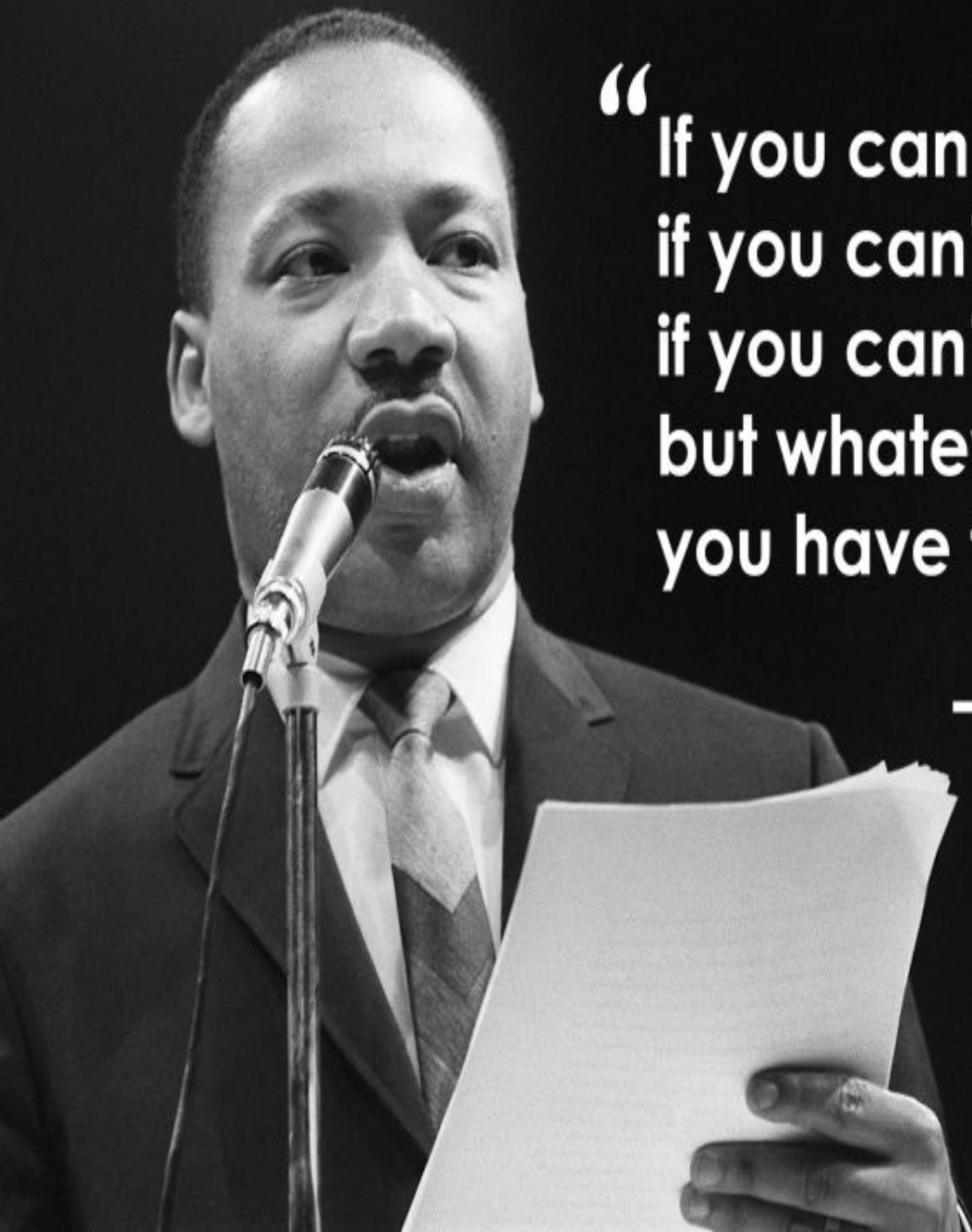


Valley College North Gym



West Los Angeles College General





**“If you can't fly, then run,
if you can't run, then walk,
if you can't walk, then crawl,
but whatever you do,
you have to keep *moving forward*.**

— *Martin Luther King Jr.*

