



Greater Los Angeles Homeless Count

2019 Results

Prop HHH Citizens
Oversight Committee



Updated July 16, 2019

BEHIND THESE NUMBERS...

are our neighbors

THAT'S why we count.

Thank you to the thousands of volunteers, partners, and community service providers who make the Homeless Count possible, and who have helped our homeless services system reach more people than ever before.



**Point-in-Time
Count**

The diagram features a central blue circle labeled 'Point-in-Time Count' with four lines radiating to four yellow circles: 'Street Count' (top), 'Shelter Count' (right), 'Youth Count' (bottom), and 'Demographic Count' (bottom-right). The background is a grayscale image of a person working at a desk with papers and a water bottle.

**Street
Count**

**Shelter
Count**

**Youth
Count**

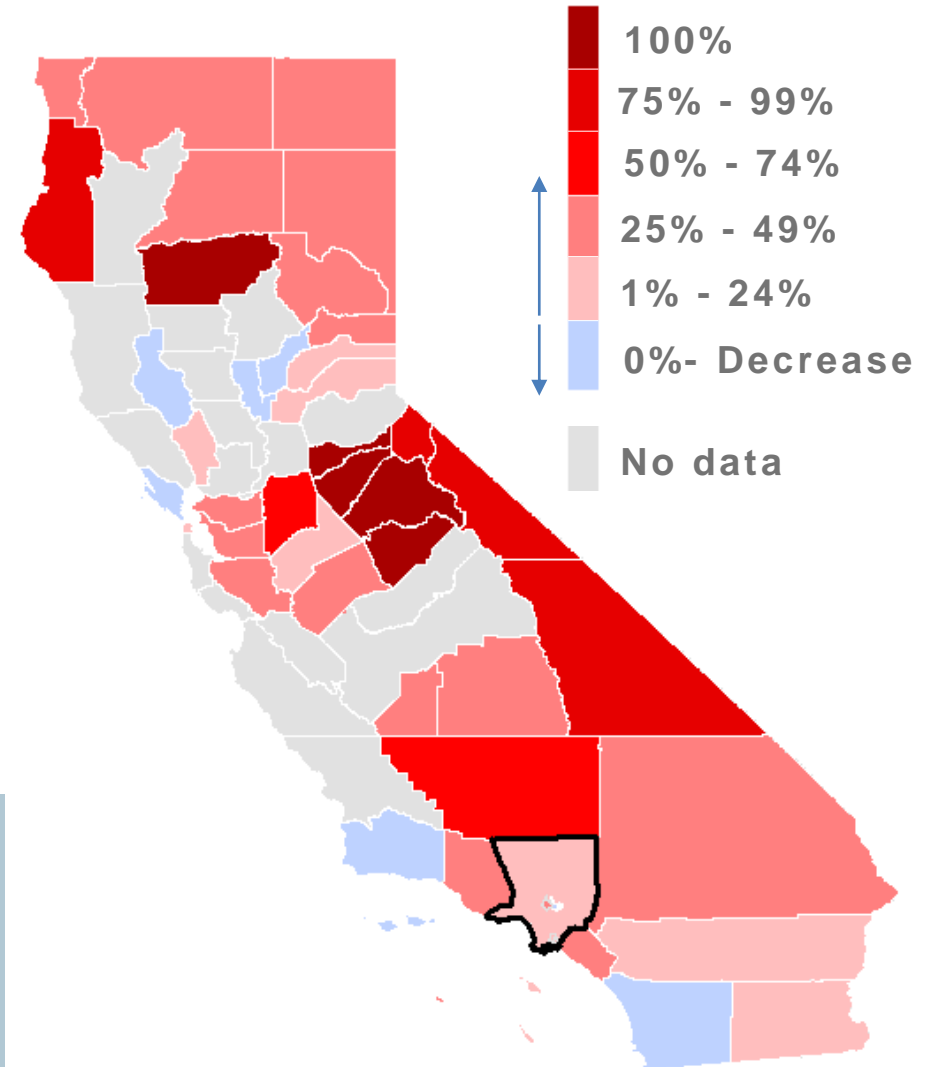
**Demographic
Count**

- **Federally mandated PIT Count**
- **HUD approved methodology**
- **USC Statistical & Demographic Consultant**

The affordable housing crisis is driving a regional increase in homelessness

- Rising homelessness is a statewide challenge
- The simple average increase among reporting areas statewide is +35%
- LA is the least affordable housing market in the United States*

Percent Change for CA Continuums of Care between 2017 and 2019 Homeless Counts ⁴



People experiencing homelessness at point-in-time count

CITY OF LOS ANGELES
16% Increase

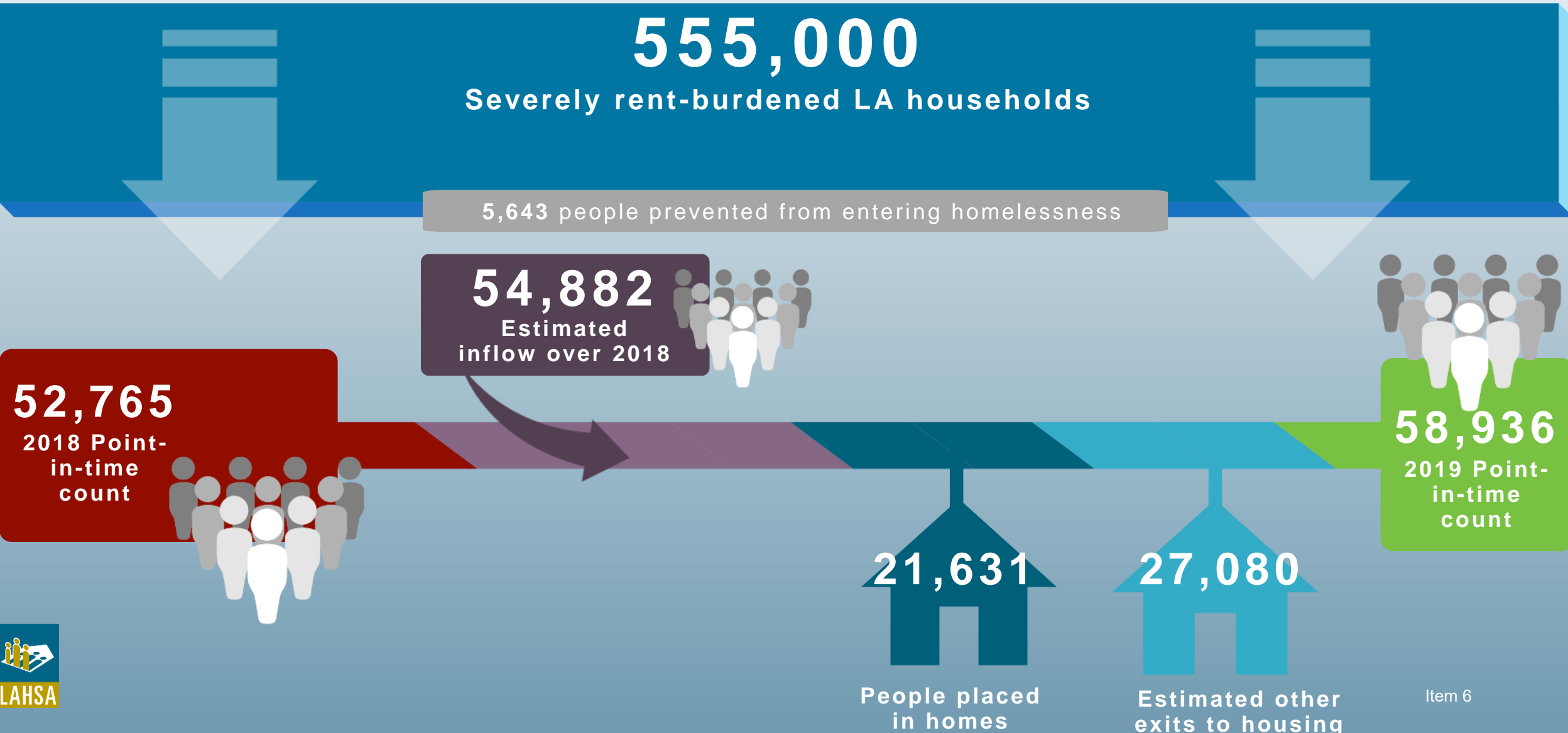


COUNTY OF LOS ANGELES
12% Increase

The LA CoC total number was 56,257 a 12% increase from 2018. The LA CoC is Los Angeles County excluding Glendale, Pasadena, & Long Beach CoCs.

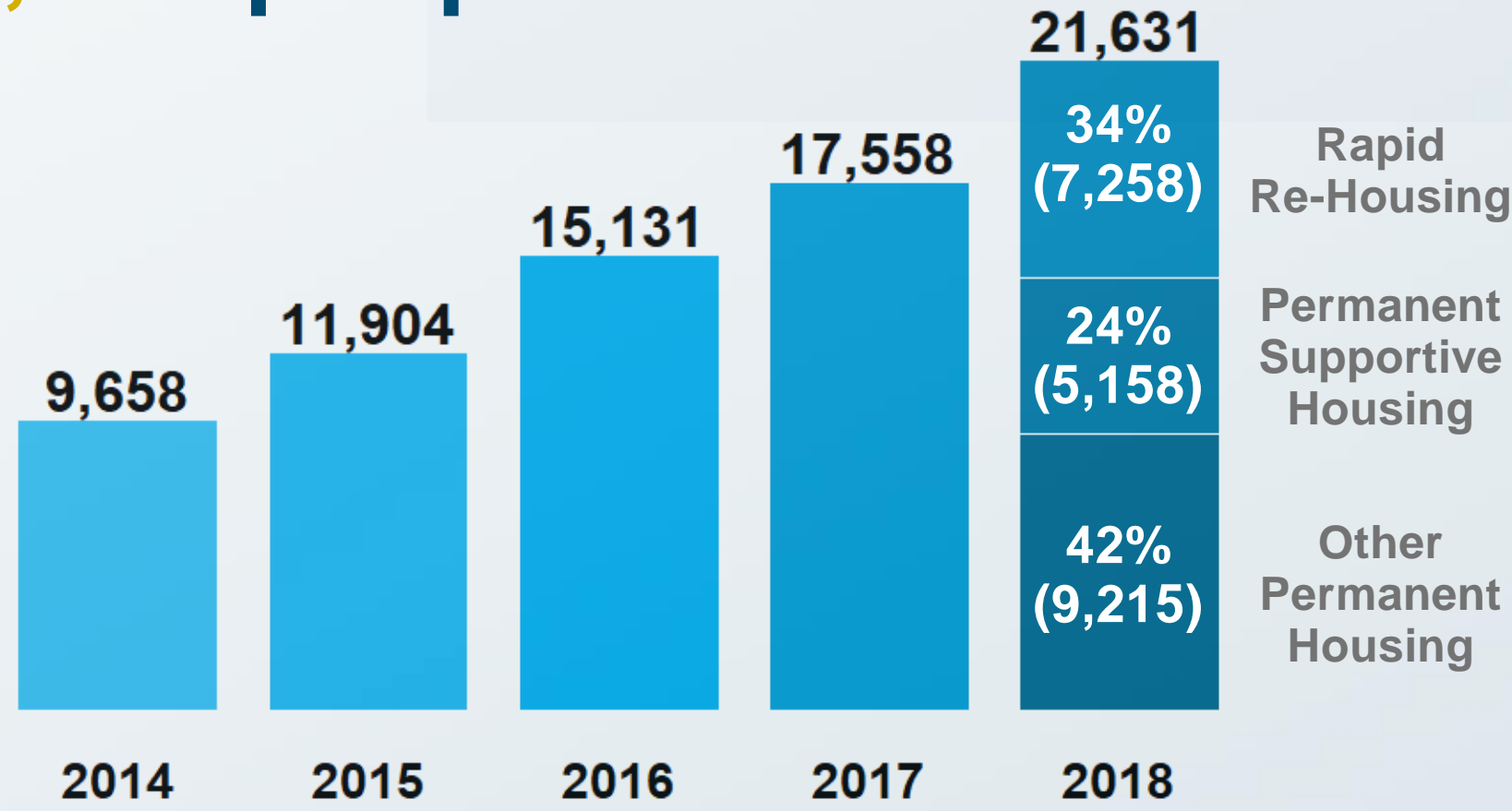


We housed more people than ever, yet our housing affordability crisis drove a net rise in homelessness



We housed **21,631** people in 2018

Housing placements increased 23% from last year and more than doubled since 2014



Housing Placements LA County 2014 - 2018

However, economic factors are **driving** increases in homelessness



Wages have not kept pace with rental cost

An LA renter earning minimum wage (\$13.25/hr) would need to work 79 hours per week to afford rent on a 1-bedroom apartment*

*The Federal Home Loan Mortgage Corporation, "Rental Burden by Metro" 2019



273,421 renter households in City of LA are severely rent-burdened**

1/3 of LA renters spend more than 50% of their household income on rent

**2017 American Community Survey Five Year Estimate

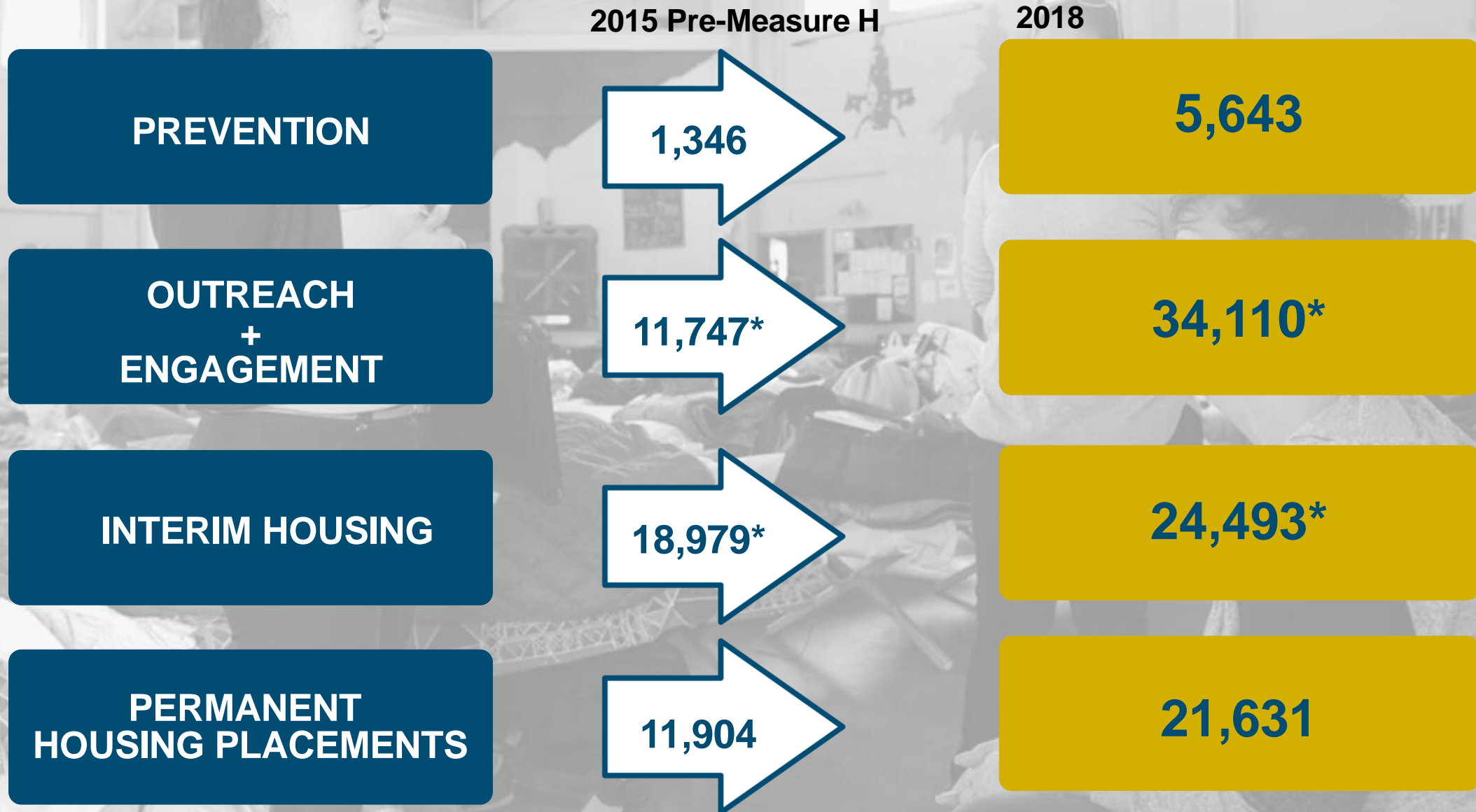


LA County needs 516,946 new affordable housing units

To meet the needs of low-income renters***

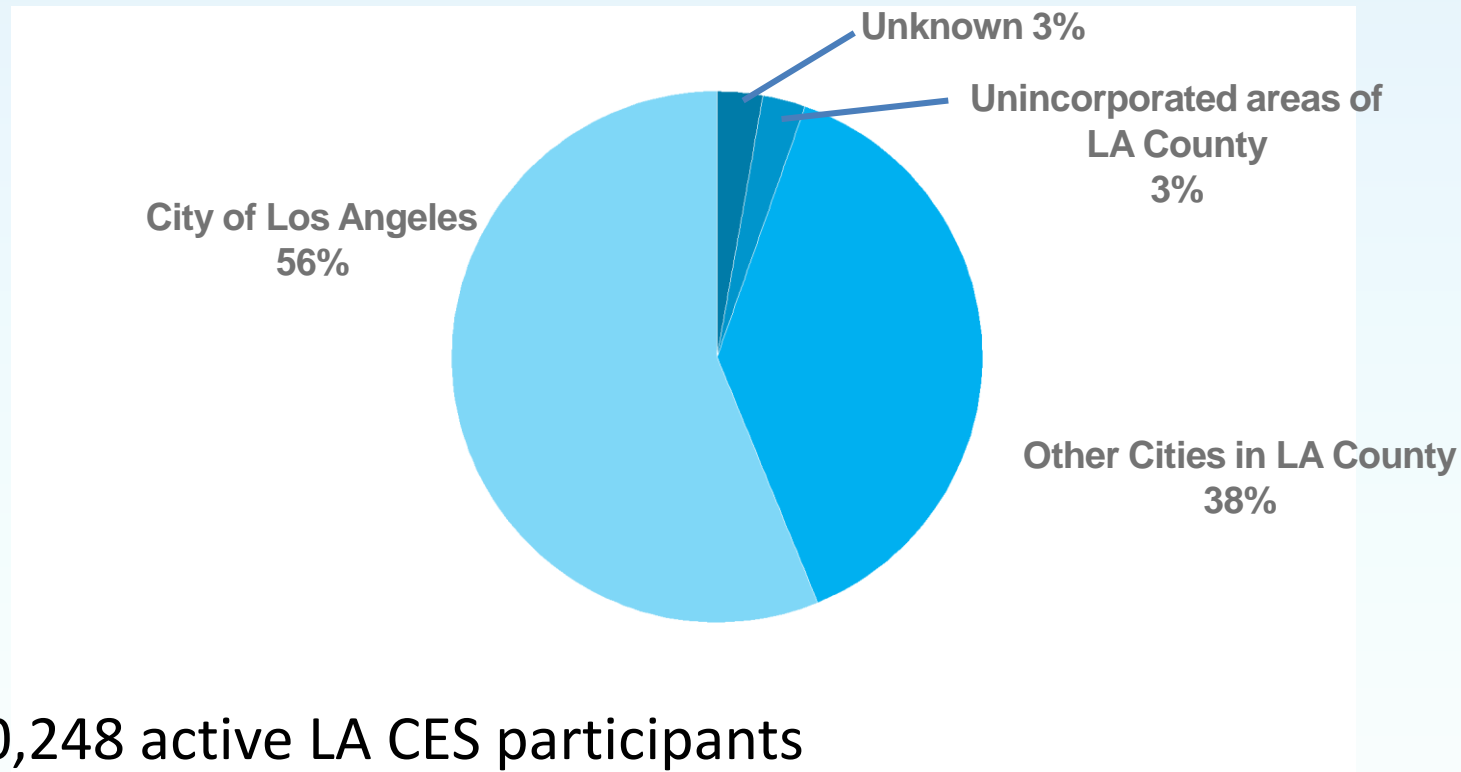
***California Housing Partnership Corporation. (May 2019) Los Angeles County Annual Affordable Housing Outcomes Report.

We are helping more people than ever



*LA CoC excludes Glendale, Pasadena, and Long Beach CoCs; Permanent Housing Placements and Prevention include all 4 CoCs in LA County

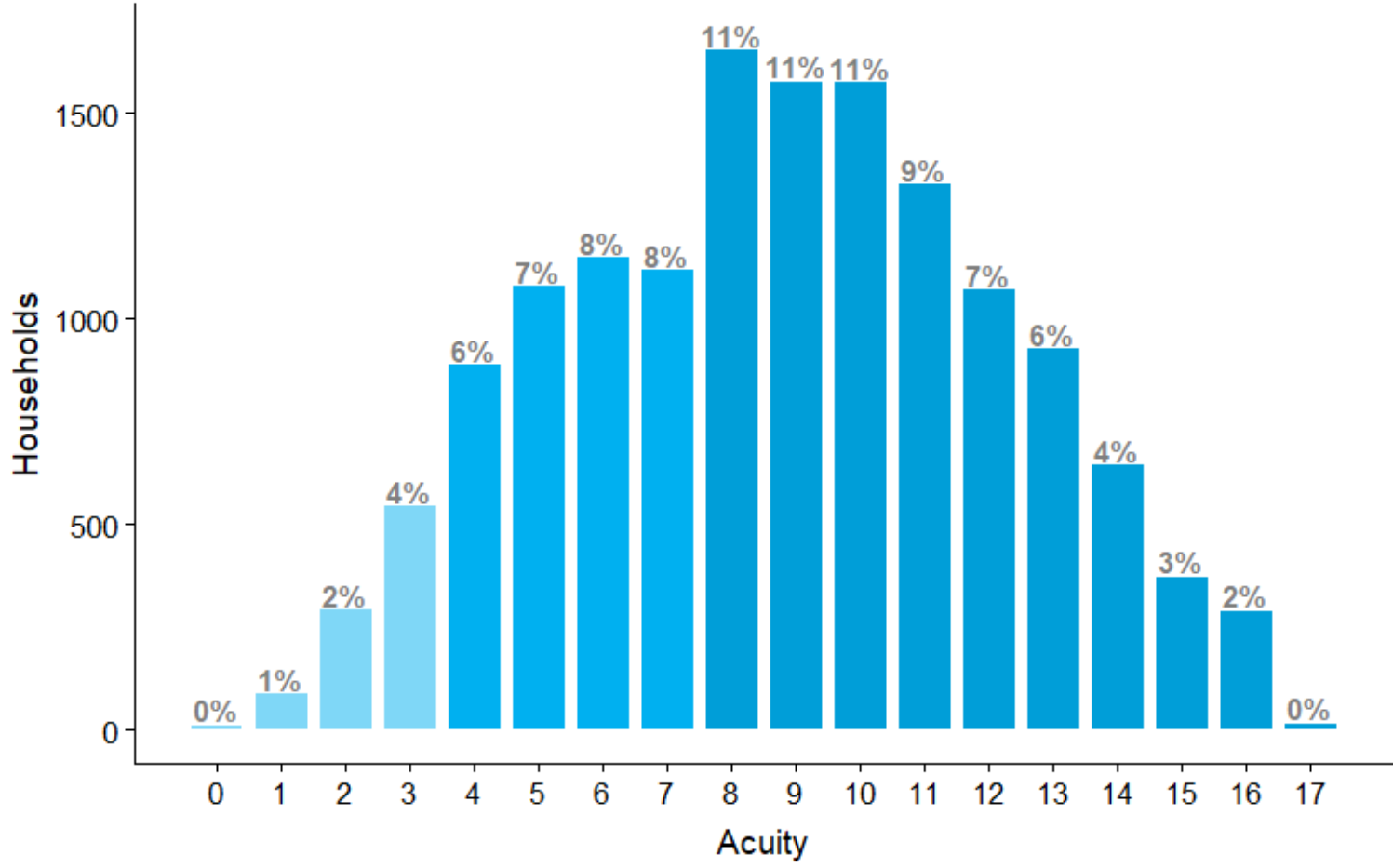
Active CES Participants



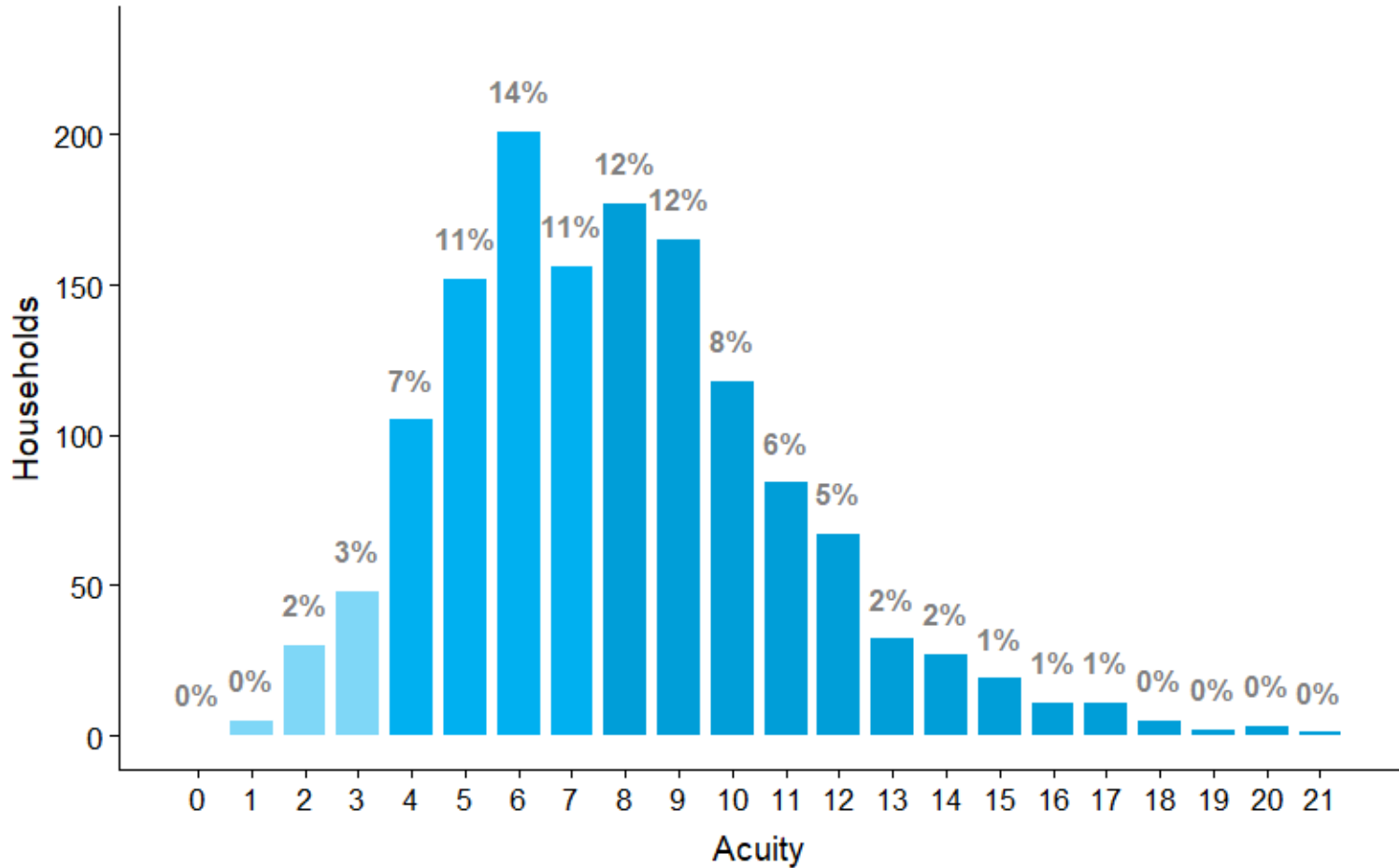
Of the 30,248 active LA CES participants
16,997 are in City of Los Angeles



Active CES Individual Households City of Los Angeles

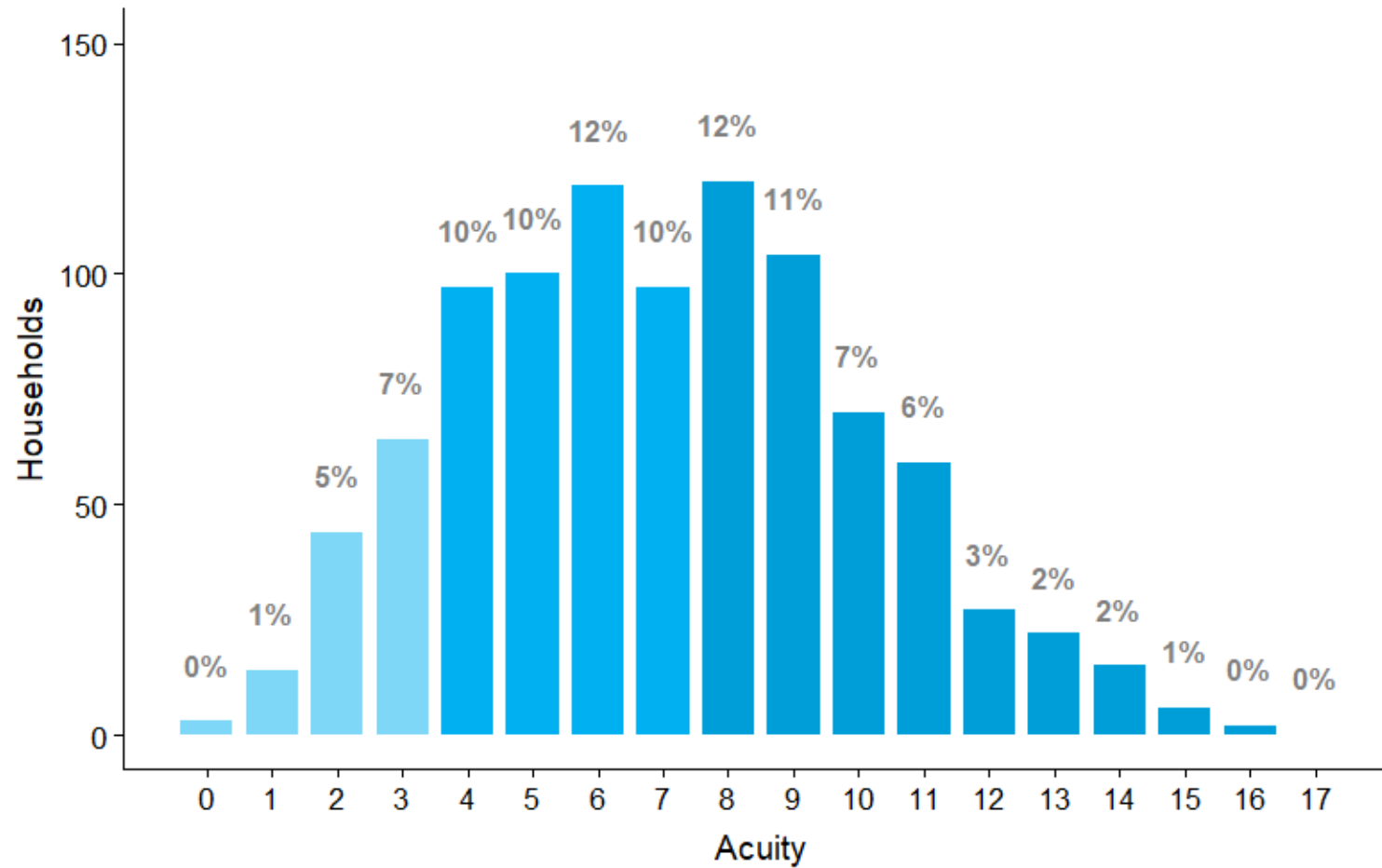


Active CES Family Households City of Los Angeles



Active CES Youth Households

City of Los Angeles





Thousands of new supportive and affordable housing units are being built

- **72%** of Prop HHH funds are already committed to build 5,303 units

Through the County and City of Los Angeles's investments:

- Approximately **1,400 units** scheduled to open in fiscal year 2019-20
- **10,000+ units** in the pipeline (committed and 2019 projected funding)

Insights from the **2019** Count Results

Homelessness remains **visible** on our streets¹⁶

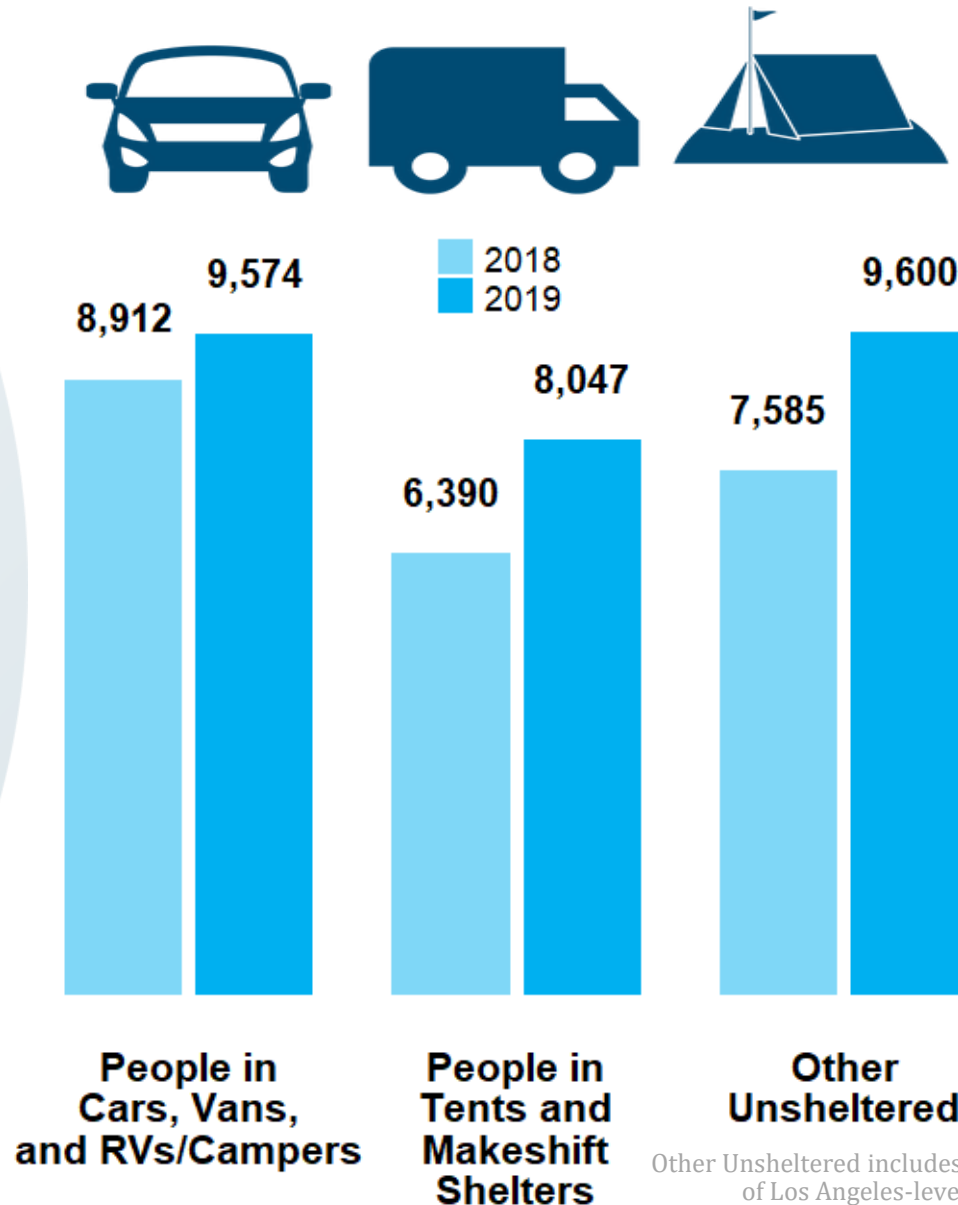
City of Los Angeles



27,221
(75%) Unsheltered



9,079
(25%) Sheltered



Key Facts:

- Outreach staff increased to over 800 people with expertise in physical, mental health and substance use disorder
- Countywide outreach coordination
- Intensive field-based service expansion for those with serious mental illness
- Safe Parking program implementation

Other Unsheltered includes persons counted on the street and accounts for differences between the City of Los Angeles-level analysis and the multipliers, which are determined at the SPA-level.

More people are sheltered through Interim Housing

City of Los Angeles



27,221
(75%) Unsheltered



9,079
(25%) Sheltered

27%
of participants exit to Permanent Housing

1,841
New Interim Housing beds (2018-2019)

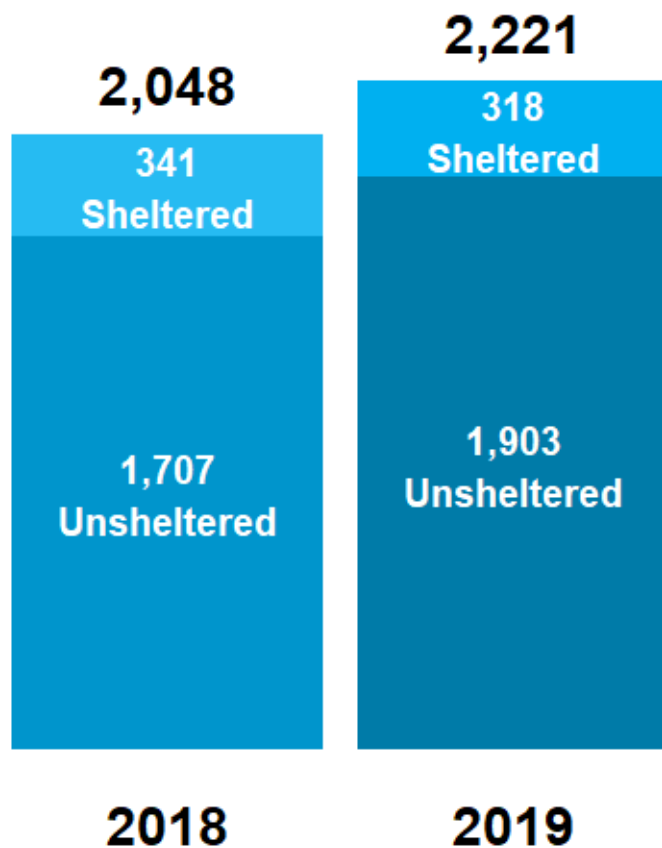
Key Facts

- Increased bed rates to provide enhanced case management
- Enhanced Mental Health services
- High acuity individuals are being sheltered at higher rates
- More than 1,600 beds in pipeline for 2019-2020

New interim housing beds, percent of participants exiting to PH, and beds in pipeline are for LA County

Veteran homelessness increased 8%

Veterans and family members
experiencing homelessness
City of Los Angeles



KEY FACTS:

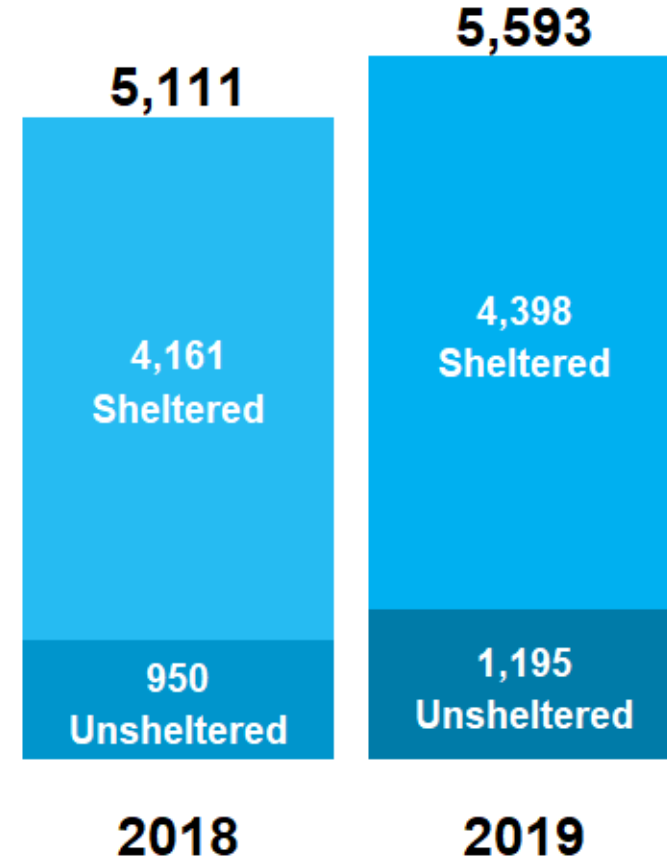
- HUD-VASH program targeted to the most vulnerable Veterans
- Homeless prevention programs expansion
- Veteran Peer Access Network (VPAN) to assist Veterans accessing services through the use of peers

Family members experiencing homelessness¹⁹ increased 9%

KEY FACTS:

- Homelessness prevention funding expansion for families
- Interim housing for families increased – more family members are sheltered.
- Rapid re-housing expansion
- Diversion/problem-solving specialists in each SPA

Family members experiencing homelessness
City of Los Angeles

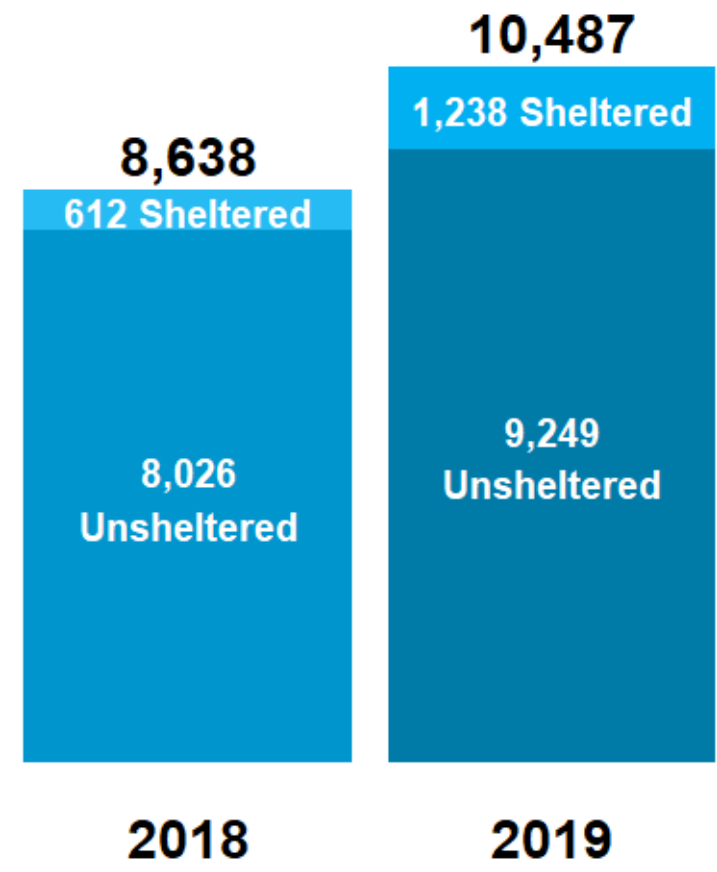


People experiencing chronic homelessness increased 21%

KEY FACTS:

- Intensive case management capacity expanded within Supportive Housing
- Newly built Supportive Housing over the next two years including HHH
- Financial management and legal services for people experiencing homelessness
- Decreasing barriers for access to housing for those most in need

Chronically Homeless Persons
City of Los Angeles

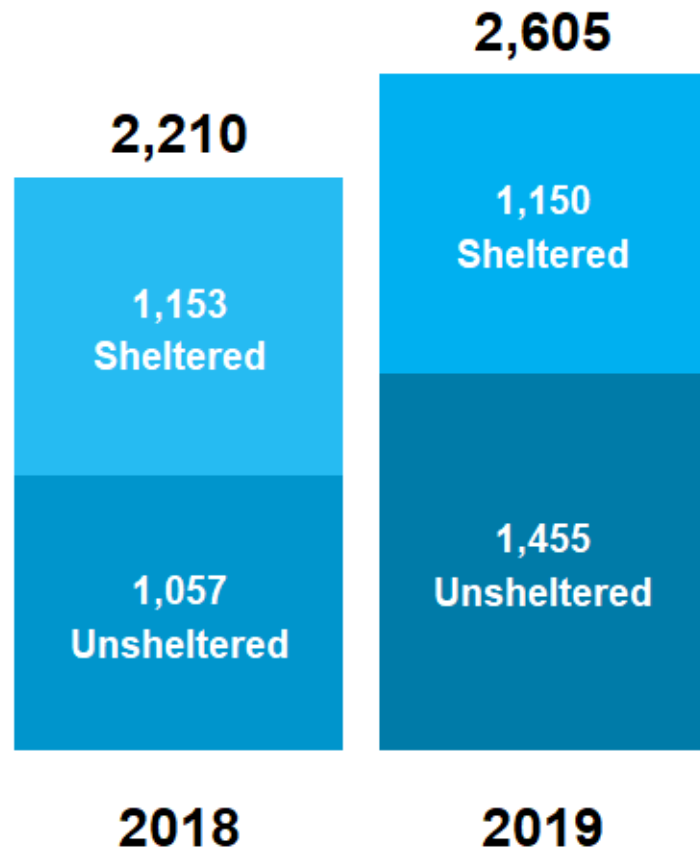


Number housed includes data from the HMIS and from DHS.



Youth homelessness increased 18%

Youth experiencing homelessness
City of Los Angeles

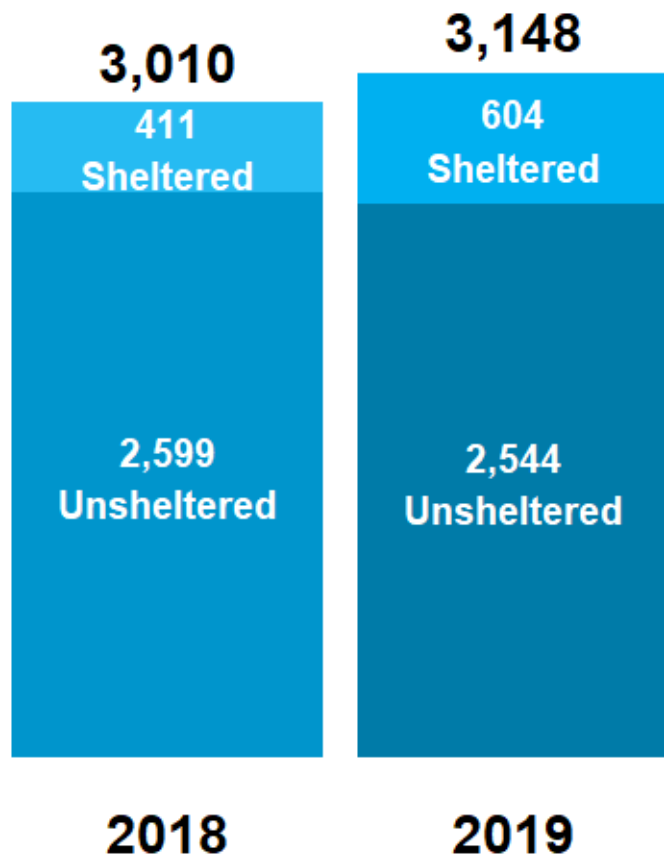


KEY FACTS:

- Prevention-focused collaboration with key partners including DCFS and Probation
- Youth-specific interim housing expansion
- Youth-specific rapid re-housing expansion
- Host Home and Youth Family Reconnection programs launched

Senior homelessness increased 5%

Population aged 62+
City of Los Angeles

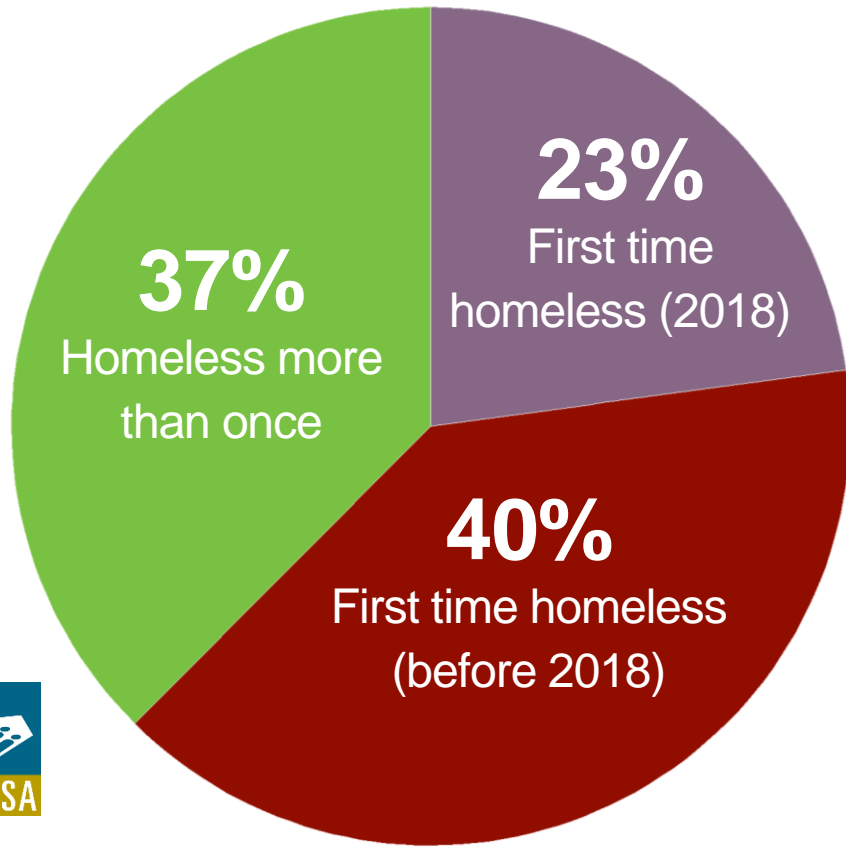


KEY FACTS:

- Workgroup of government agencies and community partners to strengthen LA's response for seniors
- Outreach at senior centers and senior meal sites
- Legal assistance and temporary rental subsidies to help seniors stay in their homes
- Partnership with Adult Protective Services
- 150 new older adults interim housing beds

Demographic Snapshots

53% of people experiencing first-time homelessness cited "Economic Hardship" as a leading factor



More than half of unsheltered adults are on their first episode of homelessness



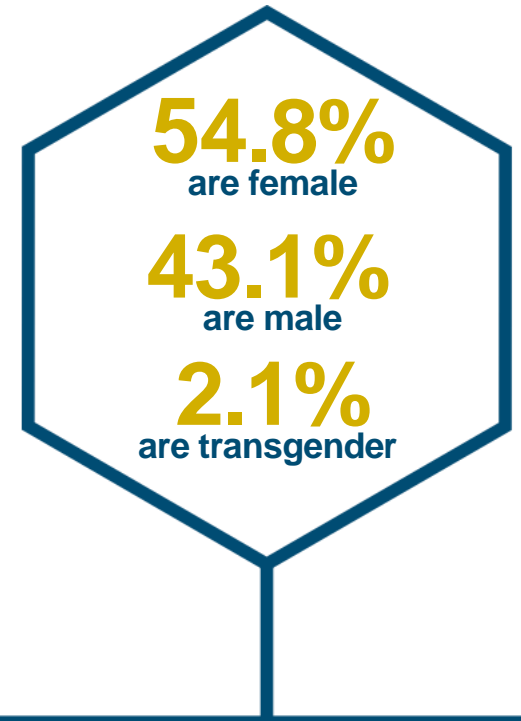
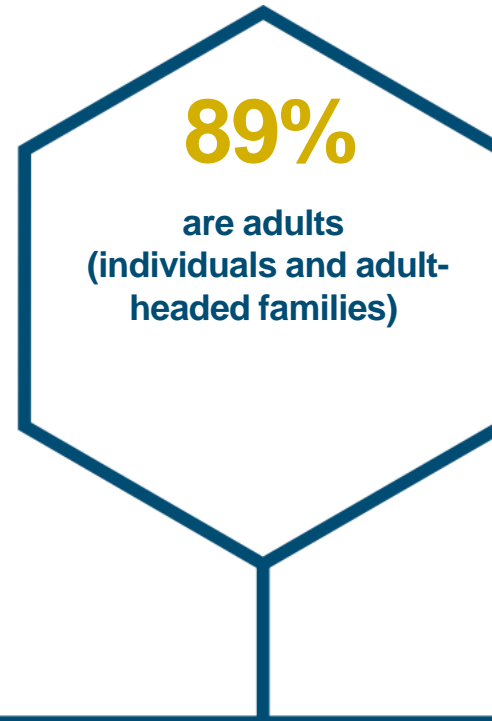
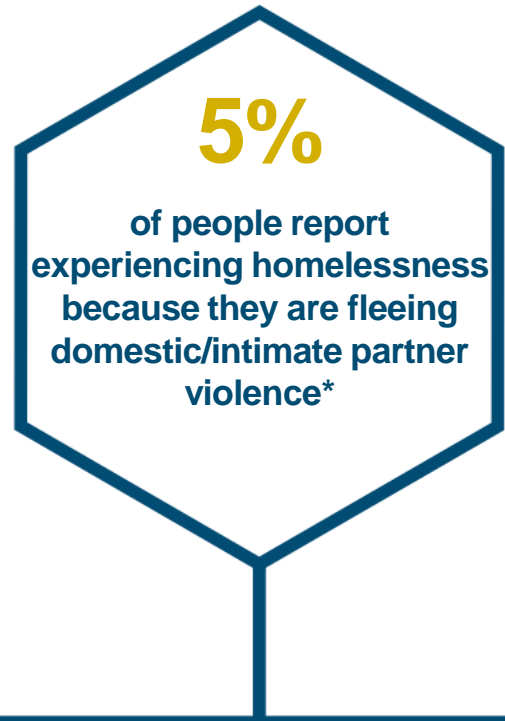
About a quarter of unsheltered adults lost their housing in 2018 and are experiencing homelessness for the first time*



*Estimates are for LA CoC (LA County excluding Glendale, Pasadena, and Long Beach)

KEY FACTS:

- New housing programs and system investments for survivors
- Confidential processes for matching to housing was developed
- Emergency Transfer Plan process for survivors created
- 177 new rapid re-housing slots created
- Countywide system coordination increased



*Estimates are for LA CoC (LA County excluding Glendale, Pasadena, and Long Beach)

Demographic summary of people experiencing domestic violence

29% of people experiencing homelessness report a serious mental illness and/or substance use disorder



DO have a serious mental illness and/or report substance use disorder

DO NOT have a serious mental illness and/or report substance use disorder

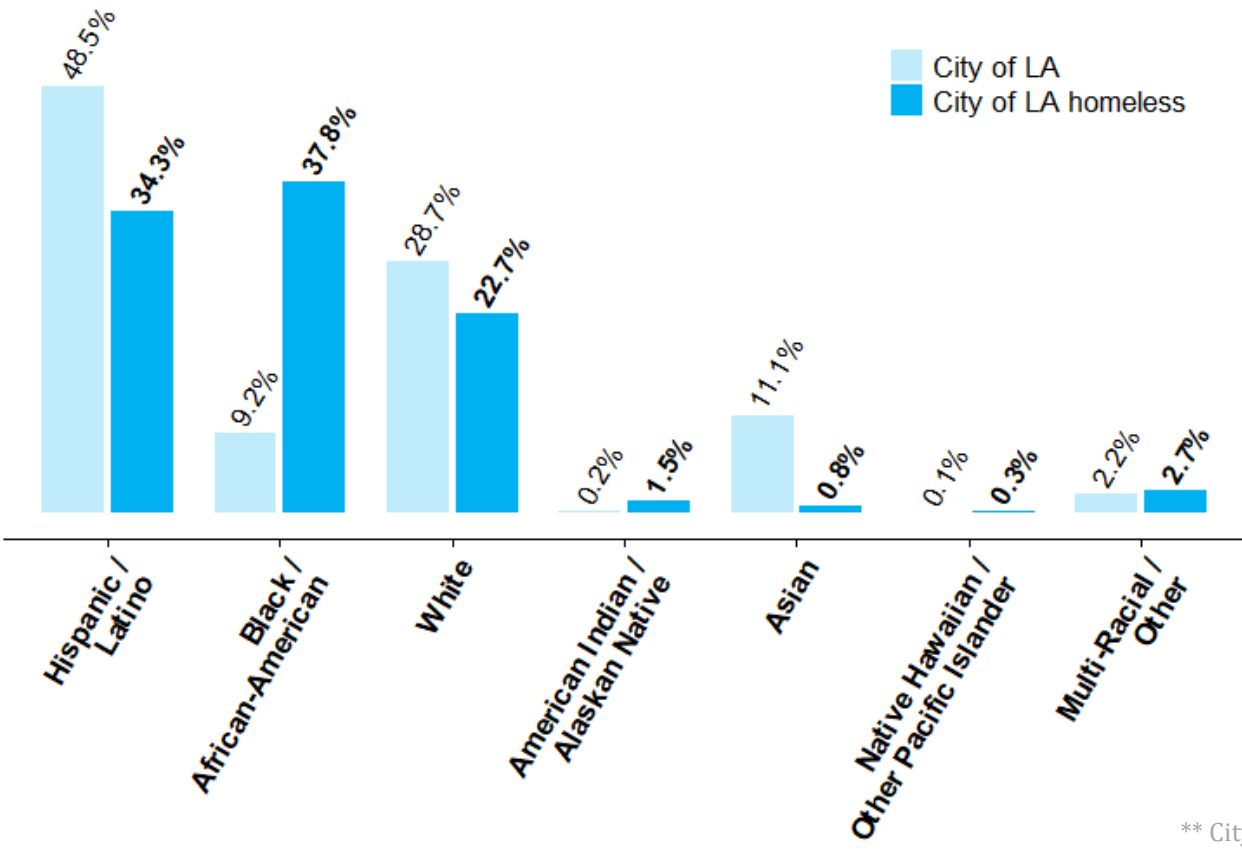
KEY FACTS:

- Intensive case management services provided to over 900 people with severe mental illness
- Expanded interdisciplinary outreach through Department of Mental Health
- 5 new Mental Health Urgent Care and Sobering Centers on Skid Row

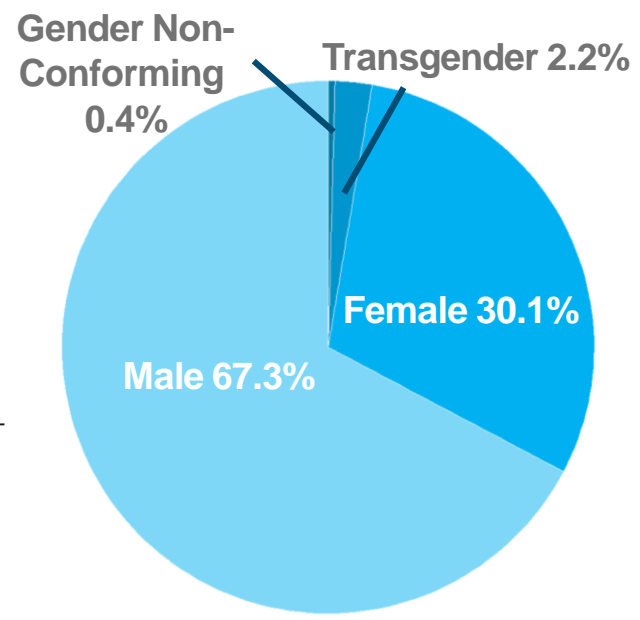
*Estimates are for LA CoC (LA County excluding Inglewood, Compton, Watts, Long Beach, and Long Beach)

KEY FACTS:

Total Homeless Population by Race and Ethnicity



Total Homeless Population by Gender City of Los Angeles



** City of LA prevalence from US Census Bureau, 2010 Census

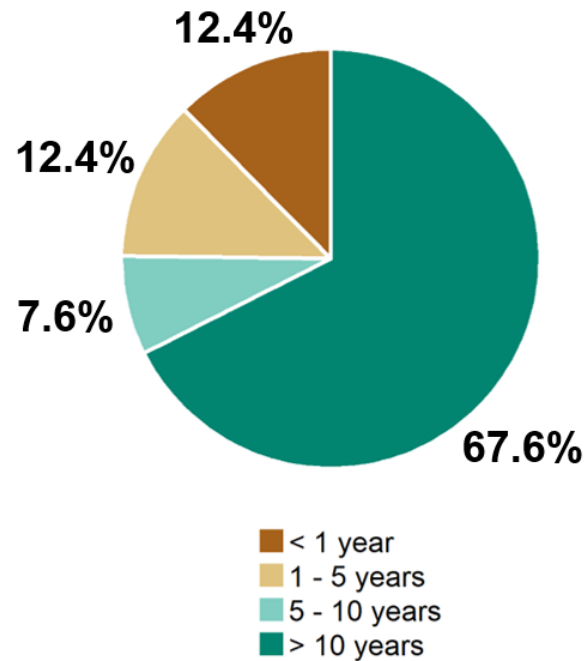
- Black people in LA continue to be 4 times more likely to experience homelessness
- Ad Hoc Committee On Black People Experiencing Homelessness – continued implementation of 67 recommendations
- 200 new interim housing beds for women
- Ad Hoc Committee On Women and Homelessness – continued implementation of 53 recommendations

Demographic summary by race/ethnicity and by gender

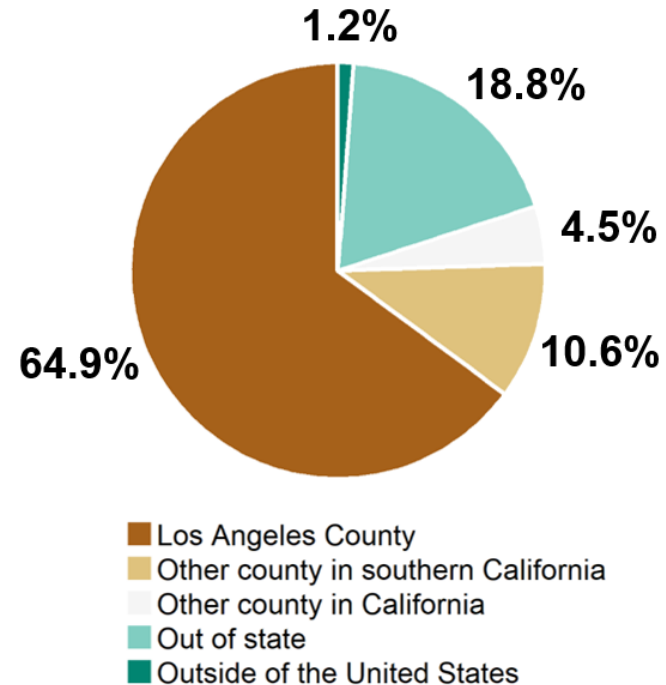


Majority of people experiencing homelessness have lived in LA County more than 10 years

Length of Time in LA County
Unsheltered Adults 25+ & Children in Adult Families
LA CoC*, 2019



Place of Residence Before Becoming Homeless
Unsheltered Adults 25+ & Children in Adult Families
LA CoC*, 2019



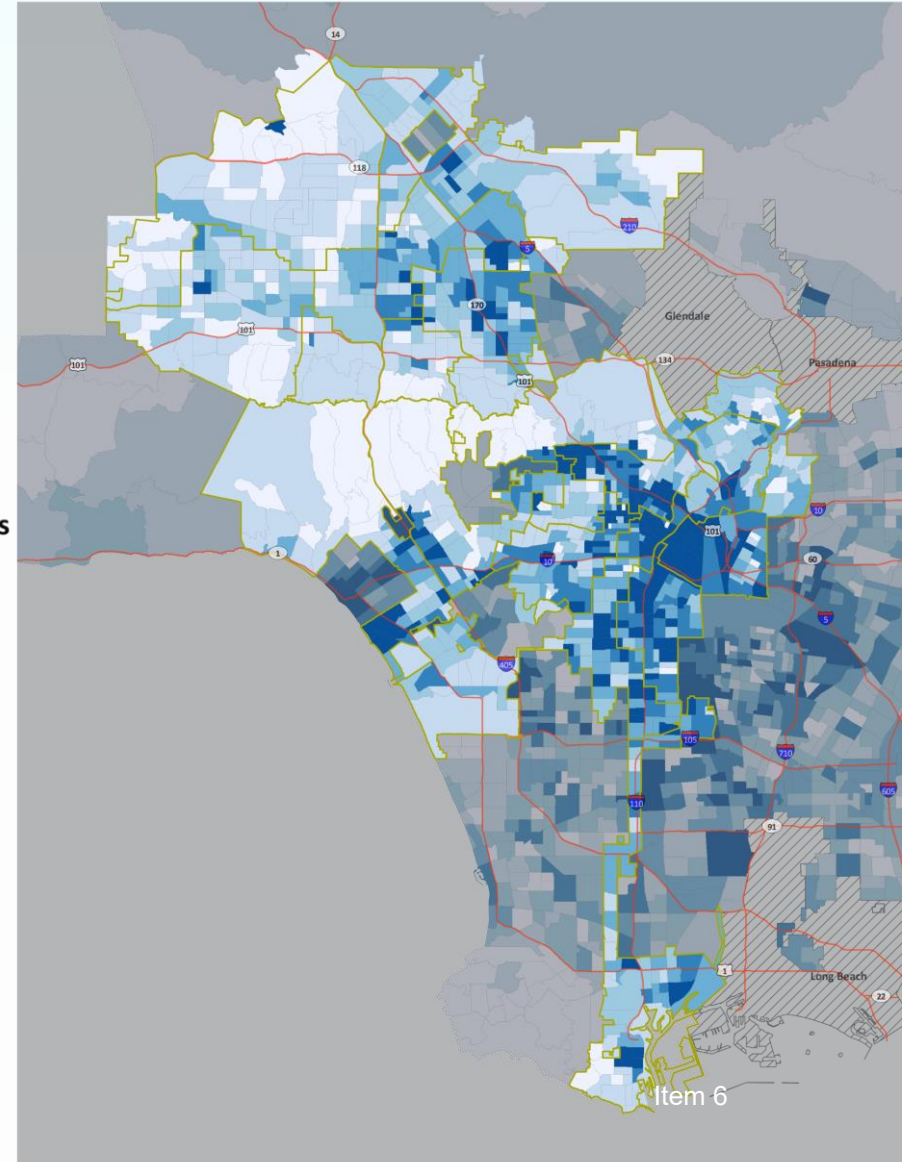
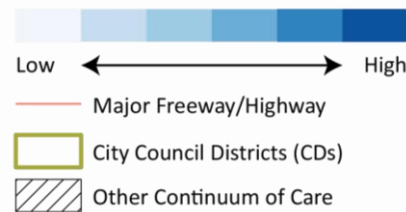
*Estimates are for LA CoC (LA County excluding Glendale, Pasadena, and Long Beach)



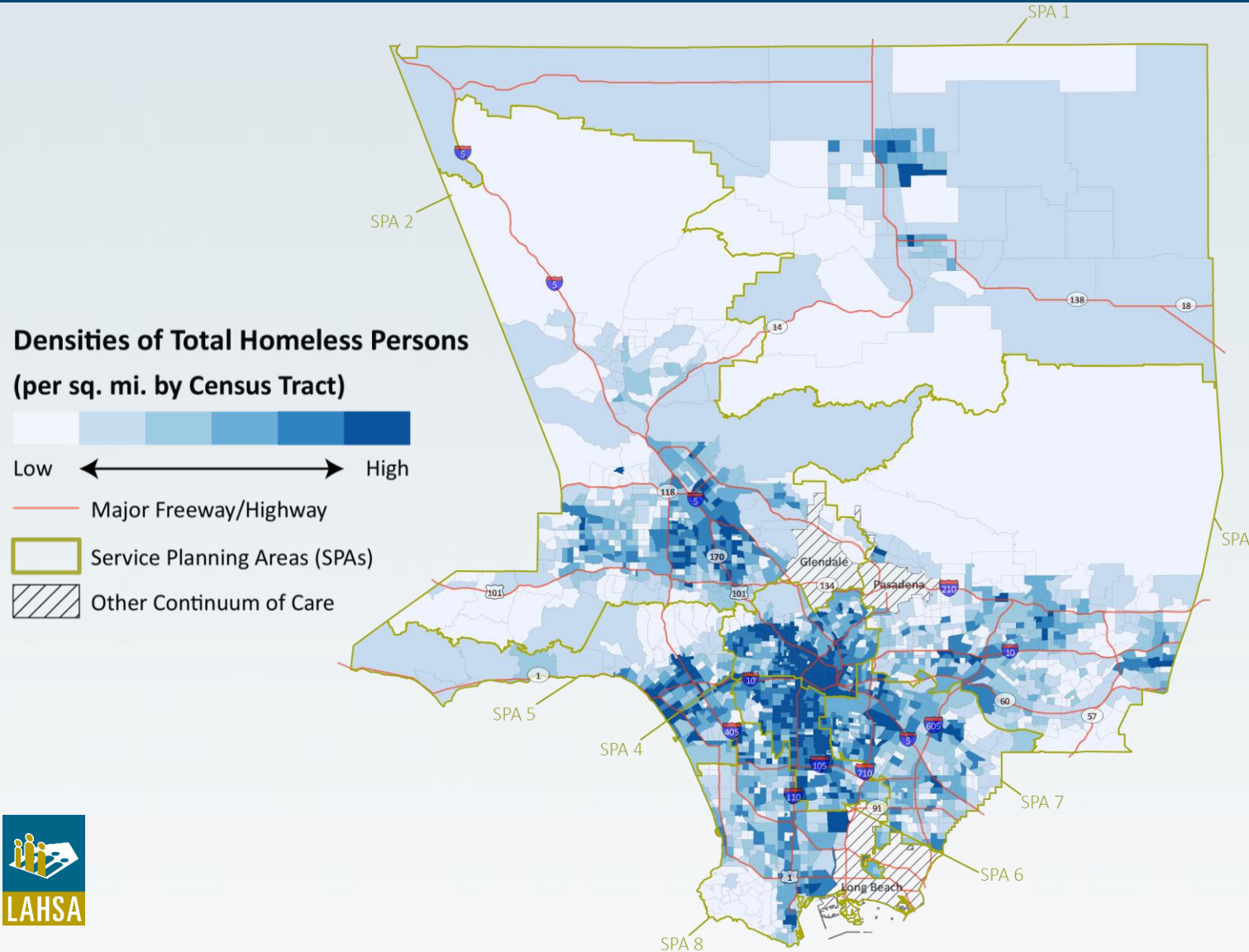
Count Results by City Council District

| City Council District (CD) | 2018 | 2019 | % Change |
|----------------------------|---------------|---------------|-------------|
| 1 | 2,452 | 2,791 | +14% |
| 2 | 1,283 | 1,678 | +31% |
| 3 | 607 | 885 | +46% |
| 4 | 777 | 1,187 | +53% |
| 5 | 883 | 1,087 | +23% |
| 6 | 2,825 | 2,642 | -6% |
| 7 | 1,259 | 907 | -28% |
| 8 | 2,131 | 2,597 | +22% |
| 9 | 3,224 | 4,455 | +38% |
| 10 | 1,310 | 1,647 | +26% |
| 11 | 2,033 | 2,284 | +12% |
| 12 | 647 | 660 | +2% |
| 13 | 2,996 | 2,983 | 0% |
| 14 | 7,068 | 7,896 | +12% |
| 15 | 1,791 | 2,601 | +45% |
| Totals | 31,285 | 36,300 | +16% |

Densities of Total Homeless Persons (per sq. mi. by Census Tract)



Count Results by Service Planning Area



| Service Planning Area (SPA) | 2018 | 2019 | % Change |
|-----------------------------|---------------|---------------|-------------|
| 1- Antelope Valley | 3,203 | 3,293 | +3% |
| 2- San Fernando Valley | 7,738 | 8,047 | +4% |
| 3- San Gabriel Valley | 4,282 | 5,021 | +17% |
| 4- Metro Los Angeles | 14,218 | 16,401 | +15% |
| 5- West | 4,401 | 5,223 | +19% |
| 6- South | 8,343 | 9,629 | +15% |
| 7- East | 4,569 | 5,040 | +10% |
| 8- South Bay | 6,011 | 6,282 | +5% |
| Totals | 52,765 | 58,936 | +12% |



Thanks to the investments made by the people of LA County, **thousands of people** have a home tonight. Our urgent mission continues to help those who don't.



LAHSA

Our system is helping more people than ever but we must address inflow into homelessness



Increase Affordable Housing

Limit Rental Increases

Prevent Unjust Evictions



We're all in this together, and **you can help!** Say **YES** to more housing in our neighborhoods.

1. Support more interim and supportive housing in your local community; Join the Everyone In Campaign at <https://everyoneinla.org>
2. Advocate for expanded state and federal funding for affordable housing and homeless services at <https://www.lahsa.org/policy/legislative-affairs>
3. Volunteer at your local homeless service agency at <https://www.lahsa.org/get-involved>
4. Volunteer for the 2020 Street Count on January 21, 22, and 23 at <https://www.theycountwillyou.org/>